



LEAGUE / SPECIAL DISTRICT MEET DIRECTOR INFORMATION

Additional information available on the OSAA website, www.osaa.org/activities/wre

PRE- LEAGUE / SPECIAL DISTRICT MEET

1. **LEAGUE / SPECIAL DISTRICT MEET DIRECTOR RESPONSIBILITY:** Each item below is the Meet Director's responsibility. If you have questions about any of these responsibilities, please contact Brad Garrett at 503.682.6722 x229 or email bradg@osaa.org.
2. **TRACKWRESTLING REQUIREMENT:** All League / Special District Meets are required to use TrackWrestling to run their events. This does not preclude the use of other software but if two systems will be used all match data must also be entered into the TrackWrestling tournament prior to the established deadlines. Instructions on using the TrackWrestling tournament interface will be provided to each qualifying event. It is the qualifying tournament's responsibility to secure the appropriate personnel to administrate the tournament via TrackWrestling interface. All wrestlers qualifying for the State Championships will be exported directly from each qualifying event's TrackWrestling tournament. No alternative online entry of qualifying wrestlers will be accepted.
3. **LEAGUE / SPECIAL DISTRICT MEET ENTRY LIMITATIONS:** Participating schools are allowed a **maximum of two entries** in each weight class into the qualifying meet.
4. **LEAGUE / SPECIAL DISTRICT MEET WEIGHT CLASSES:** The following weight classes will be used.
 - A. **Boys** - 106, 113, 120, 126, 132, 138, 145, 152, 160, 170, 182, 195, 220 and 285.
 - B. **Girls** - 100, 105, 110, 115, 120, 125, 130, 135, 140, 145, 155, 170, 190, and 235.
5. **LEAGUE / SPECIAL DISTRICT MEET ENTRY PROCEDURES AND DEADLINES:** All entries shall be submitted via Roster Entry function within TrackWrestling. The following deadlines will be used for all qualifying events:
 - A. **Girls** – Entries shall be submitted by 10 p.m. on February 5, 2022.
 - B. **5A and 4A** – Entries shall be submitted by 10 p.m. on February 12, 2022
 - C. **6A, 3A and 2A/1A** – Entries shall be submitted by 10 p.m. on February 19, 2022.
 - D. The TrackWrestling platform uses three “windows” of time that are controlled by four adjustable deadlines. Each meet is permitted to adjust Deadlines 2, 3 and 4 as needed to conform to your bracket drawing process.
 - 1) **Deadline 1: Allow teams to change their lineups until**

This deadline is the entry deadline for each classification. Default date is set for Monday prior to your meet. You can adjust this deadline if needed.

Only the school and meet administrators can see the data entered until the release lineups to statisticians' date/time. Coaches can submit and adjust entries until the release lineups to statisticians' date/time.

Note: If a wrestler is entered into a meet by the stipulated deadline, it is the responsibility of Meet Director to determine whether or not that wrestler can be moved to another eligible weight class during the bracket drawing process.
 - 2) **Deadline 2: Release lineups to the statisticians**

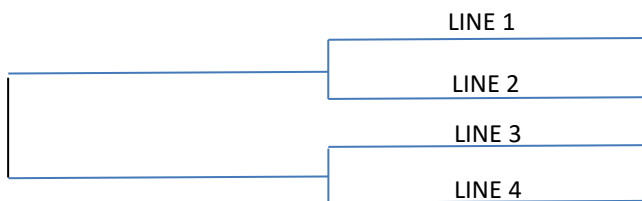
Schools have from the release lineups to statisticians' date/time until the statistician lockout date/time to enter any head-to-head information.

All coaches will be able to see who is entered into each weight class after this date.
 - 3) **Deadline 3: Lock Out Statisticians**

Schools have until the statistician's lockout date to get all seeding criteria information entered for each of their wrestlers. Coaches will no longer have the option to enter head-to-head or other types of seeding criteria into the system after this date. Meet administrators are the only ones able to see the information after this date.
 - 4) **Deadline 4: Release lineups to the public**

Anyone can see all the data after the release lineups to public date/time.

6. **LEAGUE / SPECIAL DISTRICT MEET SUBSTITUTION PROCEDURES:** If a wrestler becomes ill or injured prior to the start of weigh-ins on the first day of the meet, another wrestler from that school may replace the injured or ill wrestler.
- A medical waiver for the ill or injured wrestler, signed by an appropriate health care professional is required in order to make such substitution.
 - If no such medical waiver is provided prior to the start of weigh-ins on the first day, that wrestler shall become a forfeit and the bracket will not be redrawn.
 - If the previously described medical waiver is provided, but the school has no substitute for the ill or injured wrestler, the wrestler shall become a non-entrant, any other entrant from that school shall have their entrant number adjusted as necessary (e.g.... if a #1 entrant is withdrawn without a replacement and the affected school has a #2 entrant, the #2 will take the vacated #1 position and the #2 position will now be vacant), and the bracket will be reseeded, if necessary, and redrawn.
 - No substitutions will be allowed to the official entry list for any reason other than as provided for injury or illness.
 - Any wrestler who is removed from the qualifying meet prior to the start of the weigh-ins on the first day of the meet for any reason other than illness or injury that is accompanied by the prescribed medical waiver shall become a forfeit. The bracket will not be reseeded or redrawn.
7. **LEAGUE / SPECIAL DISTRICT MEET BRACKET DRAWING PROCEDURES:** These procedures apply to all qualifying meet brackets.
- The maximum number of seeds in each bracket shall be a number not exceeding half the bracket size.
 - No seed may be refused.
 - If two entrants from the same school are considered for seeding, they shall be seeded into opposite semi-final brackets.
8. **LEAGUE / SPECIAL DISTRICT MEET CONFLICT RESOLUTION:** Definition of a conflict: Prior the placement matches, two wrestlers have previously met in this meet or teammates appear in a consolation bracket pairing.
- If there is a conflict and one of the wrestlers involved withdraws from a match, where the conflict exists prior to its start, the conflict remains and still must be resolved.
 - The following diagram is used for clarity in the conflict resolution methodology shown below:



- Conflicts will be resolved by making the following exchanges:
 - Exchange the wrestlers on lines 2 and 3. If this creates a new conflict, as defined above, restore the wrestlers to their original bracket positions.
 - Exchange the wrestlers on lines 2 and 4. If this creates a new conflict, as defined above, restore the wrestlers to their original bracket positions.
 - The original pairings will be wrestled, unless the original conflict is due to two teammates meeting, then exchange lines 2 and 3 to separate teammates.
9. **LEAGUE / SPECIAL DISTRICT MEET VERIFICATION OF LOWEST ELIGIBLE WEIGHT CLASS:** Each member school participating in the qualifying meet shall provide an OSAA Weigh-in Report to the Meet Director prior to the drawing of brackets. This report shall contain the names and eligible weight classes for any wrestler the member school enters into the event.

Participants must be entered at either of the two weight classes listed on the weigh-in report or any higher weight class. Meet Directors shall review the weigh in report for each school to verify correct weight class of participation for all entrants.

DURING LEAGUE / SPECIAL DISTRICT MEET

1. STATE CHAMPIONSHIP INFORMATION DISTRIBUTION: www.osaa.org/activities/wre

The state championship information must be downloaded from the OSAA website. Tight timelines dictate distribution of materials for the state championship must be done at your meet site. PLEASE ensure that each coach in your qualifying meet receives the Wrestling State Championship AD/Coach Information. Your assistance in distributing this information is very much appreciated.

2. WEIGH-INS: (excerpt 2021-22 NFHS Wrestling Rules Book, Rule 4-5)

- A. "Article 2 . . . Contestants of the same gender shall have the opportunity to weigh-in shoulder-to-shoulder or by team(s) at the tournament site a maximum of two hours before the first session of each day.
- B. "ART. 3 . . . For any event, all contestants shall be present in and remain in the designated weigh-in area at the time established by the meet administration. Contestants shall not leave the designated weigh-in area unless permission is granted by the meet administration. Dual meet weigh-in shall proceed through the weight classes beginning with the random draw selected weight class, continue through the weight classes, wrap around to the 106-pound weight class and end immediately upon the completion of the highest weight class preceding the random draw selected weight class. When all wrestlers for a weight class have had an opportunity to weigh in and the next class is called, that weight class is closed. Tournament weigh-in may proceed by team(s) with the lowest weight class to the highest and end immediately upon the completion of the highest weight class. A contestant shall weigh in for only one weight class during the weigh-in period. If only one scale is available, a contestant may step on and off that scale two times to allow for mechanical inconsistencies in the scale. If multiple scales are available, a contestant may step on and off the first scale two times to allow for mechanical inconsistencies in that scale. If the contestant fails to make weight on the first scale, the contestant shall immediately step on each available scale one time in an attempt to make weight. During time off the scale(s), activities that promote dehydration, **weight loss or weight gain** are prohibited."

NOTE: Any wrestler choosing to challenge available scales will not be allowed to leave the weigh-in area until the challenge is concluded. Wrestlers are not allowed to remove clothing prior to or during the challenge process. Participation in dehydration activities will not be allowed.

- C. **Day before and/or night before weigh-ins are not permitted** prior to any qualifying meet.
- D. Qualifying meets should consider requiring participants to have PHOTO ID (student body card, driver's license, etc.) available at weigh-ins. PHOTO ID will be required at the State Championships.

3. SKIN DISEASE: The following communicable skin lesion(s) procedures are in effect: Before a wrestler with a communicable skin lesion(s) is allowed to compete, the following steps shall be completed:

- A. Wrestlers shall see an appropriate health-care professional and have the skin lesion(s) evaluated using the "OSAA Medical Release for Wrestler to Participate with Skin Lesion" form.
- B. The appropriate health-care professional shall include the following information in the evaluation:
 - 1) Date and nature of the treatment.
 - 2) Earliest date the wrestler can return to participation.
 - 3) A "bodygram" with front and back views that clearly identifies the lesion(s) in question.
 - 4) Minimum guidelines for treatment before returning to participation.
- C. Also in effect:
 - 1) Medical authorizations to compete expire 14 days from date of examination.
 - 2) Wrestlers shall be prepared to provide the required form as per NFHS Rule 4-2-3 at the scale.
 - 3) Excerpt from NFHS 2019-20 Wrestling Rules Book, Rule 4-2-4 – "If a designated, on-site appropriate health-care professional is present, he / she may overrule the diagnosis of the appropriate health-care professional signing the medical release form for a wrestler to participate or not participate with a particular skin condition."
- D. Appropriate health care professional is defined as Physician (M.D./D.O.), Physician Assistant (PA) or Nurse Practitioner

POST LEAGUE / SPECIAL DISTRICT MEET

1. CHAMPIONSHIP QUALIFICATIONS

A. 6A – 24-person OSAA bracket

- 1) **Automatic Qualifiers:** Twenty-one individuals will automatically qualify for the OSAA’s 24-person bracket in each of the 14 weight classes. Each league determines how they will select their allotted playoff spots. PIL – 3; Metro – 3; Pacific – 3; Mt Hood – 3; Three Rivers – 3; Mountain Valley – 3; Southwest – 3
- 2) **Cutoff Date:** The automatic qualifiers must be determined by 10pm on Saturday, February 19. Once the qualifiers are determined, the fourth-place finisher from each league will be “pooled” and a defined criterion applied to select three additional qualifiers.

B. 5A –16-person OSAA bracket

- 1) **Automatic Qualifiers:** Sixteen individuals will automatically qualify for the OSAA’s 16-person bracket in each of the 14 weight classes. Each league determines how they will select their allotted playoff spots. Northwest Oregon – 4; Midwestern – 4; Mid-Willamette – 4; Intermountain – 4
- 2) **Cutoff Date:** The automatic qualifiers must be determined by 10pm on Saturday, February 12.

C. 4A – 16-person OSAA bracket

- 1) **Automatic Qualifiers:** Sixteen individuals will automatically qualify for the OSAA’s 16-person bracket in each of the 14 weight classes. Each special district determines how they will select their allotted playoff spots. Special District 1 – 4; Special District 2 – 4; Special District 3 – 4; Special District 4 – 4
- 2) **Cutoff Date:** The automatic qualifiers must be determined by 10pm on Saturday, February 12.

D. 3A – 9-person OSAA bracket

- 1) **Automatic Qualifiers:** Nine individuals will automatically qualify for the OSAA’s 9-person bracket in each of the 14 weight classes. Each special district determines how they will select their allotted playoff spots. Special District 1 – 3; Special District 2 – 3; Special District 3 – 3
- 2) **Cutoff Date:** The automatic qualifiers must be determined by 10pm on Saturday, February 19.

E. 2A/1A – 11-person OSAA bracket

- 1) **Automatic Qualifiers:** Eleven individuals will automatically qualify for the OSAA’s 11-person bracket in each of the 14 weight classes. Each special district determines how they will select their allotted playoff spots. Special District 1 – 2; Special District 2 – 2; Special District 3 – 2; Special District 4 – 2
- 2) **Cutoff Date:** The automatic qualifiers must be determined by 10pm on Saturday, February 19. Once the qualifiers are determined, the third-place finisher from each league will be “pooled” and a defined criterion applied to select three additional qualifiers.

F. Girls (6A-1A) – 12-person OSAA bracket

- 1) **Automatic Qualifiers:** Eight individuals will automatically qualify for the OSAA’s eight-person bracket in each of the 14 weight classes. Each special district determines how they will select their allotted playoff spots. Special District 1– 3; Special District 2 – 3, Special District 3 – 3, Special District 4 - 3
- 2) **Cutoff Date:** The automatic qualifiers must be determined by 10pm on Saturday, February 5, 2022

2. **VACANT ENTRY ROTATION:** If a qualifying meet is unable to provide the allocated number of entries by the established entry deadline in a weight class the vacant entry will be awarded to another meet based on the rotation outlined below. Alternate positions will be rotated annually.

	Alternate 1	Alternate 2	Alternate 3	Alternate 4	Alternate 5	Alternate 6	Alternate 7
6A	SD 3	SD 4	SD 5	SD 6	SD 7	SD 1	SD2
5A	SD 2	SD 3	SD 4	SD 5			
4A	SD 1	SD 2	SD 3	SD 4			
3A	SD 1	SD 2	SD 3				
2A/1A	SD 3	SD 4	SD 1	SD 2			
Girls	SD4	SD 3	SD 2	SD 1			

3. **PREVIOUS STATE PLACE WINNERS:** www.osaa.org/activities/wre

Previous years state place information has been provided to TrackWrestling and will automatically be uploaded with the wrestler's profile when they qualify for the State Championships.

4. **PRE-STATE CHAMPIONSHIP POSTINGS:** www.osaa.org/activities/wre

- A. All entries will be posted on the website on **Sunday, February 20, by 6pm.**
- B. **CORRECTIONS ONLY:** (*spelling, grade, school, etc.*) Contact Brad Garrett, 503.682.6722 x229, toll free 1.888.838.6722 or via email bradg@osaa.org

5. **STATE CHAMPIONSHIPS – INDIVIDUAL SPORT SUBSTITUTIONS** (*OSAA Handbook, Executive Board Policies*) (*Revised Winter 2015*)

- A. The following shall be the policy for substitutions in individual sport State Championship events. All individuals who are substitutes for individual qualifiers must have participated in a District or Special District Meet.

G. **Wrestling**

- 1) **Individuals:** Substitutions may be made by the **League** / Special Meet Director until 4pm two business days (**6A,5A,4A,3A, 2A/1A – Feb 23 and Girls – Feb 21**) prior to the first day of state championship competition.
- 2) A one-point team penalty shall be assessed to any team failing to bring a participant who has qualified through the **League** / Special District Meet to the state championships, unless that participant was replaced prior to the substitution deadline. This penalty applies to each participant failing to appear at the state championships.

Schools are required to notify the OSAA prior to the start of a state championship event if a student entered in the event will be unable to compete for any reason. **The Meet Director or the school's Athletic Director or coach must notify the OSAA office, Brad Garrett, 503.682.6722 x229.**

6. **WITHDRAWAL DURING A COMPETITION** (*OSAA Handbook, Executive Board Policies*):

- A. Removal of a team from competition prior to completion of that competition shall be considered a gross act of unsportsmanlike conduct.
- B. In such a case, the school shall forfeit the contest and an administrator and the coach responsible for the action shall appear before the Executive Board at its next regularly scheduled meeting. See **Executive Board Policies, Withdrawal from State Championships** for additional information.



SEEDING CRITERIA AND PROCEDURES

Additional information available on the OSAA website, www.osaa.org/activities/wre

The following criteria and procedures are applicable to all classifications:

1. For classifications with at least 16 qualifiers there will be eight wrestlers seeded in each weight class. The 2A/1A classification will have four wrestlers seeded in each weight class, the 3A classification will have three wrestlers seeded in each weight class, and the Girls classification will have four wrestlers seeded in each weight class.
2. All seeded positions to the maximum will be awarded and the seeds may come from a combination of Special District Champions, Special District Runners-up and other returning state place finishers as outlined in the criteria and procedures described below.
3. Seeded positions will be determined using the criteria listed below.
 - A. Special District Champions, returning state place finishers and all other Special District Runners-up in each weight class will be grouped in pools.
 - B. Each criterion within a pool will be applied to the entire pool. When a criterion separates the pool, thereby creating the next set of seeded wrestlers, the pool will be regrouped and the criterion applied in descending order.
 - C. This process will continue until all criteria have been exhausted within a pool.
 - D. Once all of the criteria within a pool have been applied to determine a seeded rank within the pool, the rankings shall determine the next seed positions to be awarded.
 - E. This process shall continue until all of the seeded positions have been awarded (eight for classifications with at least 16 qualifiers and four for classifications with less than 16 qualifiers).
4. Initial awarding of seeds should disregard any bracket distribution provisions, as they are addressed separately and only after determining the initial seeding of a bracket.
5. In counting the number of wins against an opponent within any of the criteria, more wins than losses against an opponent shall count as a single win over that opponent, regardless of the number of matches won against that opponent.
 - A. For example, if A has beaten B twice and lost to B once, this is counted as a single win over B, or if A has beaten B four times, this is still counted as a single win over
 - B. However, "splits" shall not be counted as a win or a loss for either wrestler; e.g., if A and B have each beaten each other an equal number of times.
6. While head-to-head competition is considered the highest seeding criterion within any pool, it does not stand on its own if used as the first criterion in a seeding/ranking scenario. Therefore, it will always be the last criterion applied within any pool or sub-pool.
 - A. For example, if A beat B and C beat D, there isn't a way to compare A and C solely on the basis of the head-to-head competition.
 - B. However, if other criterion is used to rank the pool first and then apply the head-to-head criterion, the head-to-head criterion has meaning. Using the same example, if other seeding criterion initially ranks the pool as B, D, C, A, then when the head-to-head criterion is applied the final ranking will become A, B, C, D.
7. **SEEDING CRITERIA**
 - A. **Pool 1:** Composed of all Special District Champions. **EXCEPTIONS:** For 2022 within the 6A classification only four of the seven Special District Champions will receive a Pool 1 ranking . The three lowest ranked wrestlers within this pool will be advanced and pooled with the seven #2 finishers to create Pool 2. For 2022 within the 3A classification only one wrestler from the three Special District Champions will receive a Pool 1 ranking. The other two wrestlers within this pool will be advanced with the Pool 2 wrestler to create Pool 3.

1) Criterion 1: State placement in immediately prior year.

- a) To begin the seeding process, create a pool of all of the immediately prior year's place winners and rank them by their place finish in any state's high school individual championships, regardless of the state and classification.
- b) The following priority system will be used to determine the ranking order when more than one wrestler has the same place finish. The higher rank will be awarded to the wrestler who is:
 - (1) Returning in the same weight class. If more than one qualifier meets this criterion, apply Criterion 2 through 6 to determine rank amongst those returning in the same weight class.
 - (2) Has moved down one or more weight classes.
 - (a) The higher rank will go to the wrestler(s) who has moved the fewest number of weight classes.
 - (b) If more than one qualifier meets this criterion, apply Criterion 2 through 6 to determine rank amongst those who have moved down the same number of weight classes.
 - (3) Has moved up one or more weight classes.
 - (a) The higher rank will go to the wrestler(s) who has moved the fewest number of weight classes.
 - (b) If more than one qualifier meets this criterion, apply Criterion 2 through 6 to determine rank amongst those who have moved up the same number of weight classes.

2) Criterion 2: State Placement two years prior to current year.

- a) Rank any remaining currently unranked Special District Champions by their place finish in any state's high school individual championships two years prior to the current year, regardless of the state and classification.
- b) The following priority system will be used to determine the seeding order when more than one wrestler has the same place finish. The higher seed will be awarded to the wrestler who is:
 - (1) Returning in the same weight class. If more than one qualifier meets this criterion, apply Criterion 3 through 6 to determine rank amongst those returning in the same weight class.
 - (2) Has moved down one or more weight classes.
 - (a) The higher rank will go to the wrestler(s) who has moved the fewest number of weight classes.
 - (b) If more than one qualifier meets this criterion, apply Criterion 3 through 6 to determine rank amongst those who have moved down the same number of weight classes.
 - (3) Has moved up one or more weight classes.
 - (a) The higher rank will go to the wrestler(s) who has moved the fewest number of weight classes.
 - (b) If more than one qualifier meets this criterion, apply Criterion 3 through 6 to determine rank amongst those who have moved up the same number of weight classes.

3) Criterion 3: Common opponent shared by all remaining unranked wrestlers in this pool.

- a) In order for this criterion to even be used, all of the remaining unranked wrestlers in this pool must have a common opponent amongst all of them, and none of the wrestlers are returning state placers.
- b) If they do, create a pool from the remaining unranked Special District Champions that has more wins than losses over the common opponent.
- c) If more than one qualifier is in the pool, apply Criterion 4 through 6 to determine a rank amongst the members of this pool.

4) Criterion 4: Total varsity season wins.

- a) In order for this criterion to even be used, all of the remaining unranked wrestlers in this pool must have a common opponent amongst all of them, none of the wrestlers are returning state placers, and common opponents fails to rank the wrestlers involved.
- b) Rank all remaining currently unranked Special District Champions by their total varsity season wins.
- c) If more than one qualifier has the same number of wins, create sub-pools of those with the same number of wins, and then to each sub-pool apply Criterion 5 and 6 to determine a rank amongst the members of each sub-pool.

5) Criterion 5: Varsity season winning percentage.

- a) This criterion will only be invoked whenever pools or sub-pools from all of the first four criterion fail to create a natural ranking order.
- b) Rank all members of the pool or sub-pool from said criterion by their varsity season winning percentage.
- c) If more than one of the members of the pool or sub-pool under consideration has the same winning percentage, apply Criterion 6 to determine the final rank of the members.

6) Criterion 6: Random draw.

- a) This criterion will only be invoked whenever pools or sub-pools from all of the preceding five criterion fail to create a natural ranking order.
- b) Final ranking of all members of the pool or sub-pool from said criterion shall be determined by a random draw amongst all members of the pool or sub-pool.
- c) Note: This would mean that two or more wrestlers under consideration have the same returning state championship place finish with the same weight class movement in both of the two prior years, the same results against common opponents, and identical season records. The probability of all of these conditions being met is extremely low, yet it is still possible.

7) Criterion 7: Head-to-head victories over those wrestlers in this pool.

- a) Once an initial ranking is created from Criterion 1 through 6, create a sub-pool of the Special District Champions with head-to-head wins over one or more wrestlers within this pool.
- b) The pool should be ranked in the order of each sub-pool member's current ranking as initially determined by Criterion 1 through 6.
- c) Select the highest ranked qualifier from the sub-pool created in the last step.
 - (1) This qualifier will take the ranked position currently assigned to his highest ranked head-to-head opponent, provided that position is higher than the one this wrestler currently occupies.
 - (2) The displaced opponent, and all other wrestlers currently ranked below that wrestler, will progressively move down one ranked position.
 - (3) If the qualifier currently under consideration doesn't change rank positions, move to the next qualifier in the sub-pool and repeat the previous two steps.
- d) Repeat Step C until no seeds change position in a single pass through those steps.
 - (1) It is possible for "round robin" situations to arise amongst three or more qualifiers under this criterion. This will usually become readily apparent by the third or fourth pass through Step C and is evidenced by an inability to obtain a final order amongst the wrestlers in question.
 - (2) When this occurs, the rankings prior to that point shall be re-established and no further changes to the rankings that include wrestlers involved in the "round robin" shall occur.
 - (3) However, any remaining head-to-head considerations of wrestlers currently ranked lower than those involved in the "round robin" shall be considered in repeat applications of Step C.

8) When a final ranked order of the Special District Champions has been achieved within this pool, seeds will be assigned in rank order to the members of this pool

9) Seeds determined from this pool are final; i.e., no wrestlers from any of the remaining pool(s) may displace the seeds already established in this pool.

10) If all of the required seeds for the classification have been reached, the seeding process is concluded at this point.

B. **Pool 2:** Composed of returning state place finishers who are not Special District Champions. This pool can include any wrestler qualifying for the OSAA State Championship who was not a Special District Champion, regardless of the wrestler's qualifying place finish in their respective Special District tournament. **EXCEPTION: For 2022 the 6A classification Pool 2 will combine the remaining three unseeded Special District Champions and the seven Special District second place finishers to determine seeds (5-8). For 2022 the 3A classification Pool 2 consists of the three Special District second place finishers, one of which will advance to Pool 3.** This pool does not apply to the 2A/1A and Girls classifications.

- 1) Criterion 1: State placement in immediately prior year.
 - a) To begin the seeding process, create a pool of all of the immediately prior year's place winners and rank them by their place finish in any state's high school individual championships, regardless of the state and classification.
 - b) The following priority system will be used to determine the ranking order when more than one wrestler has the same place finish. The higher rank will be awarded to the wrestler who is:
 - (1) Returning in the same weight class. If more than one qualifier meets this criterion, apply Criterion 2 through 6 to determine rank amongst those returning in the same weight class.
 - (2) Has moved down one or more weight classes.
 - (a) The higher rank will go to the wrestler(s) who has moved the fewest number of weight classes.
 - (b) If more than one qualifier meets this criterion, apply Criterion 2 through 5 to determine rank amongst those who have moved down the same number of weight classes.
 - (3) Has moved up one or more weight classes.
 - (a) The higher rank will go to the wrestler(s) who has moved the fewest number of weight classes.
 - (b) If more than one qualifier meets this criterion, apply Criterion 2 through 5 to determine rank amongst those who have moved up the same number of weight classes.
- 2) Criterion 2: Common opponent shared by all remaining unranked wrestlers in this pool.
 - a) In order for this criterion to even be used, all of the remaining unranked wrestlers in this pool must have a common opponent amongst all of them.
 - b) If they do, create a pool from the remaining unranked Special District Champions that has more wins than losses over the common opponent.
 - c) If more than one qualifier is in the pool, apply Criterion 3 through 5 to determine a rank amongst the members of this pool.
- 3) Criterion 3: Total varsity season wins.
 - a) Rank all remaining currently unranked members of the pool or sub-pool by their total varsity season wins.
 - b) If more than one qualifier has the same number of wins, create sub-pools of those with the same number of wins, and then to each sub-pool apply Criterion 4 and 5 to determine a rank amongst the members of each sub-pool.
- 4) Criterion 4: Varsity season winning percentage.
 - a) This criterion will only be invoked whenever pools or sub-pools from all of the first three criterion fail to create a natural ranking order.
 - b) Rank all members of the pool or sub-pool from said criterion by their varsity season winning percentage.
 - c) If more than one of the members of the pool or sub-pool under consideration has the same winning percentage, apply Criterion 5 to determine the final rank of the members.
- 5) Criterion 5: Random draw.
 - a) This criterion will only be invoked whenever pools or sub-pools from all of the preceding four criterion fail to create a natural ranking order.
 - b) Final ranking of all members of the pool or sub-pool from said criterion shall be determined by a random draw amongst all members of the pool or sub-pool.
- 6) Criterion 6: Head-to-head victories over those wrestlers in this pool.
 - a) Once an initial ranking is created from Criterion 1 through 5, create a sub-pool of those wrestlers with head-to-head wins over one or more wrestlers within this pool.
 - b) The pool should be ranked in the order of each sub-pool member's current ranking as initially determined by Criterion 1 through 5.
 - c) Select the highest ranked qualifier from the sub-pool created in the last step.
 - (1) This qualifier will take the ranked position currently assigned to his highest ranked head-to-head opponent, provided that position is higher than the one this wrestler currently occupies, and as long as said opponent is

not from the same Special District as the qualifier under consideration. (Note: This “protects” a Special District Runner-up from being seeded behind the third or fourth place finisher from the same Special District.)

- (2) The displaced opponent, and all other wrestlers currently ranked below that wrestler, will progressively move down one ranked position.
- (3) If the qualifier currently under consideration doesn’t change rank positions, move to the next qualifier in the sub-pool and repeat the previous two steps.

d) Repeat Step C until no seeds change position in a single pass through those steps.

- (1) It is possible for “round robin” situations to arise amongst three or more qualifiers under this criterion. This will usually become readily apparent by the third or fourth pass through Step C, and is evidenced by an inability to obtain a final order amongst the wrestlers in question.
- (2) When this occurs, the rankings prior to that point shall be re-established and no further changes to the rankings that include wrestlers involved in the “round robin” shall occur.
- (3) However, any remaining head-to-head considerations of wrestlers currently ranked lower than those involved in the “round robin” shall be considered in repeat applications of Step C. When a final ranked order of the combined members of Pool 1 and Pool 2 has been achieved, seeds will be assigned in rank order to the members of the combined pools.

7) Seeds determined from this pool are final; i.e., no wrestlers from the remaining pool may displace the seeds already established in this pool.

8) If all of the required seeds for the classification have been reached, the seeding process is concluded at this point.

C. **Pool 3:** Composed of any remaining Special District Runners-up who were not members of Pool 2; i.e., Special District runners-up who are not returning state place winners from the immediately previous year. **EXCEPTION: For 2022 in the 3A classification, Pool 3 will consist of the two remaining unseeded wrestlers from Pool 1 and the ranked wrestler from Pool 2.** This pool does not apply to the 2A/1A and Girls classifications.

1) Criterion 1: Common opponent shared by all wrestlers in this pool.

- a) In order for this criterion to even be used, all of the wrestlers in this pool must have a common opponent amongst all of them.
- b) If they do, create a pool from the pool members that has more wins than losses over the common opponent.
- c) If more than one qualifier is in the pool, apply Criterion 2 through 4 to determine a rank amongst the members of this pool.

2) Criterion 2: Total varsity season wins.

- a) Rank all remaining currently unranked members of the pool or sub-pool by their total varsity season wins.
- b) If more than one qualifier has the same number of wins, create sub-pools of those with the same number of wins, and then to each sub-pool apply Criterion 3 and 4 to determine a rank amongst the members of each sub-pool.

3) Criterion 3: Varsity season winning percentage.

- a) This criterion will only be invoked whenever pools or sub-pools from all of the first two criterion fail to create a natural ranking order.
- b) Rank all members of the pool or sub-pool from said criterion by their varsity season winning percentage.
- c) If more than one of the members of the pool or sub-pool under consideration has the same winning percentage, apply Criterion 4 to determine the final rank of the members.

4) Criterion 4: Random draw.

- a) This criterion will only be invoked whenever pools or sub-pools from all of the preceding three criterion fail to create a natural ranking order.
- b) Final ranking of all members of the pool or sub-pool from said criterion shall be determined by a random draw amongst all members of the pool or sub-pool.

5) Criterion 5: Head-to-Head victories over those wrestlers in any pool.

- a) Once an initial ranking is created from Criterion 1 through 4, create a sub-pool of those wrestlers with head-to-head wins over one or more wrestlers within this pool.

- b) The sub-pool should be ranked in the order of each sub-pool member's current ranking as initially determined by Criterion 1 through 4.
- c) Select the highest ranked qualifier from the sub-pool created in the last step.
 - (1) This qualifier will take the ranked position currently assigned to his highest ranked head-to-head opponent, provided that position is higher than the one this wrestler currently occupies, and as long as said opponent is not from the same Special District as the qualifier under consideration.
 - (2) The displaced opponent, and all other wrestlers currently ranked below that wrestler, will progressively move down one ranked position.
 - (3) If the qualifier currently under consideration doesn't change rank positions, move to the next qualifier in the sub-pool and repeat the previous two steps.
- d) Repeat Step C until no seeds change position in a single pass through those steps.
 - (1) It is possible for "round robin" situations to arise amongst three or more qualifiers under this criterion. This will usually become readily apparent by the third or fourth pass through Step C, and is evidenced by an inability to obtain a final order amongst the wrestlers in question.
 - (2) When this occurs, the rankings prior to that point shall be re-established and no further changes to the rankings that include wrestlers involved in the "round robin" shall occur.
 - (3) However, any remaining head-to-head considerations of wrestlers currently ranked lower than those involved in the "round robin" shall be considered in repeat applications of Step C.

6) 3A Classification only:

- a) Under no circumstances will a Special District runner up be seeded ahead of the champion **from the same Special District**. If this occurs, the wrestlers will be re-ranked with the Special District runner-up seeded directly after the Special District champion. As an example, assume the wrestlers in the pool are Region B #1, Region C #1 and Region B #2. When the criteria are applied, B #2 is seeded second, C #1 is seeded third, and B #1 is seeded fourth. The wrestlers will be re-ranked so that the two region champions move up one seed, and B #2 will end up the fourth seed.
 - b) The previous does not apply if the Special District runner-up is from the same Special District as the #1 seed from Pool 1.
- 7) When a final ranked order of the combined members of all pools has been achieved, seeds will be assigned in rank order to the members of the combined pools. This will become the final seed order.

8. 6A and 2A/1A Pool 4: Wildcard Qualifying Procedure

A. Determination of qualifying regional #4 wrestlers in the 6A classification and regional #3 wrestlers in the 2A/1A classification.

1) Criterion 1: Follow the leader

- a) Follow the leader principal will be used to create a ranked order (e.g., #4 wrestler from the league with the designated #1 seed will be the #1 ranked #4 wrestler in this pool, etc.)

2) Criterion 2 – State placement in immediately prior year.

- a) To begin the seeding process, create a pool of all of the immediately prior year's place winners and rank them by their place finish in any state's high school individual championships, regardless of the state and classification.
- b) The following priority system will be used to determine the ranking order when more than one wrestler has the same place finish. The higher rank will be awarded to the wrestler who is:
 - (1) Returning in the same weight class. If more than one qualifier meets this criterion, apply Criterion 2 through 6 to determine rank amongst those returning in the same weight class.
 - (2) Has moved down one or more weight classes.
 - (a) The higher rank will go to the wrestler(s) who has moved the fewest number of weight classes.
 - (b) If more than one qualifier meets this criterion, apply Criterion 2 through 5 to determine rank amongst those who have moved down the same number of weight classes.

(3) Has moved up one or more weight classes.

(a) The higher rank will go to the wrestler(s) who has moved the fewest number of weight classes.

(b) If more than one qualifier meets this criterion, apply Criterion 2 through 5 to determine rank amongst those who have moved up the same number of weight classes.

3) Criterion 3 - Head-to-head victories over those wrestlers in this pool.

a) Once an initial ranking is created from Criterion 1 and 2 create a sub-pool of wrestlers with head-to-head wins over one or more wrestlers in the pool

b) The pool should be ranked in the order of each sub-pool member's current ranking as initially determined by Criterion 1 and 2

c) Select the highest ranked qualifier from the sub-pool created in the last step.

(1) This qualifier will take the ranked position currently assigned to his highest ranked head-to-head opponent, provided that position is higher than the one this wrestler currently occupies.

(2) The displaced opponent, and all other wrestlers currently ranked below that wrestler, will progressively move down one ranked position.

(3) If the qualifier currently under consideration doesn't change rank positions, move to the next qualifier in the sub-pool and repeat the previous two steps.

d) Repeat Step C until no seeds change position in a single pass through those steps.

(1) It is possible for "round robin" situations to arise amongst three or more qualifiers under this criterion. This will usually become readily apparent by the third or fourth pass through Step C and is evidenced by an inability to obtain a final order amongst the wrestlers in question.

(2) When this occurs, the rankings prior to that point shall be re-established and no further changes to the rankings that include wrestlers involved in the "round robin" shall occur.

(3) However, any remaining head-to-head considerations of wrestlers currently ranked lower than those involved in the "round robin" shall be considered in repeat applications of Step C.

9. With the seeding complete, attention will then be turned to the 2022 OSAA Bracket Composition and Drawing Procedures.



Oregon School Activities Association

25200 SW Parkway Avenue, Suite 1
Wilsonville, OR 97070

503.682.6722 FAX 503.682.0960 http:// www.osaa.org

MEDICAL RELEASE FOR WRESTLER TO PARTICIPATE WITH SKIN LESION

Name (Must be Legible): _____

Date of Exam: ___ / ___ / ___

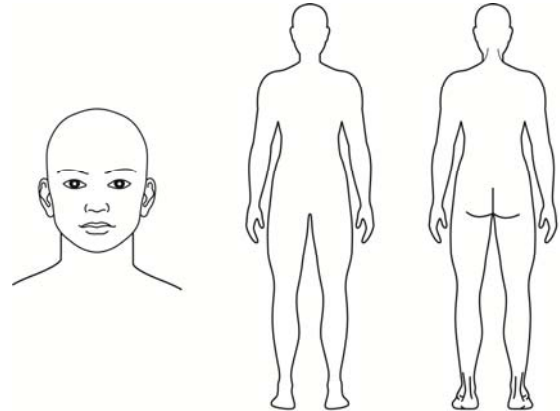
Diagnosis: _____

Mark Location AND Number of Lesion(s)

Location AND Number of Lesion(s): _____

Medication(s) used to treat lesion(s): _____

Date Treatment Started: ___ / ___ / ___



NOTE: Medical authorizations to compete expire 14 calendars days from date of examination.

Earliest Date may return to participation: ___ / ___ / ___

Provider Signature: _____

Office Phone #: _____

Provider Name (Must be Legible): _____
Physician (M.D. / D.O), Physician Assistant (PA) or Nurse Practitioner

Office Address: _____

Below are some treatment guidelines that suggest **MINIMUM TREATMENT** before return to wrestling:

Bacterial Diseases (impetigo, boils): To be considered "non-contagious," all lesions must be scabbed over with no oozing or discharge and no new lesions should have occurred in the preceding 48 hours. Oral antibiotic for 72 hours is considered a minimum to achieve that status. If new lesions continue to develop or drain after 72 hours, MRSA (Methicillin Resistant Staphylococcus Aureus) should be considered.

Herpetic Lesions (Simplex, fever blisters/cold sores, Zoster, Gladiatorum): To be considered "non-contagious," all lesions must be scabbed over with no oozing or discharge and no new lesions should have occurred in the preceding 72 hours. For a first episode of Herpes Gladiatorum, wrestlers should be treated and not allowed to compete for a minimum of 10 days. If general body signs and symptoms like fever and swollen lymph nodes are present, that minimum period of treatment before return to wrestling should be extended to 14 days. Recurrent outbreaks require a minimum of 120 hours of oral anti-viral treatment, again so long as no new lesions have developed and all lesions are scabbed over.

Tinea Lesions (ringworm scalp, skin): Oral or topical treatment for 72 hours on skin and **oral treatment for 14 days** on scalp.

Scabies, Head Lice: 24 hours **after appropriate topical management.**

Conjunctivitis (Pink Eye): 24 hours of topical or oral medication and no discharge.

Molluscum Contagiosum: Upon treatment with curettage and hyfrecator, may cover with bioocclusive and wrestle immediately.

Note to Appropriate Health-Care Professionals: Non-contagious lesions do not require treatment prior to return to participation (e.g. eczema, psoriasis, etc.). Please familiarize yourself with NFHS Wrestling Rules 4-2-3, 4-2-4 and 4-2-5 which states:

"ART. 3 . . . If a participant is suspected by the referee or coach of having a communicable skin disease or any other condition that makes participation appear inadvisable, the coach shall provide current written documentation as defined by the NFHS or the state associations, from an appropriate health-care professional stating that the suspected disease or condition is not communicable and that the athlete's participation would not be harmful to any opponent. This document shall be furnished at the weigh-in for the dual meet or tournament. The only exception would be if a designated, on-site meet appropriate health-care professional is present and is able to examine the wrestler either immediately prior to or immediately after the weigh-in. Covering a communicable condition shall not be considered acceptable and does not make the wrestler eligible to participate."

"ART. 4 . . . If a designated on-site meet appropriate health-care professional is present, he/she may overrule the diagnosis of the appropriate health-care professional signing the medical release form for a wrestler to participate or not participate with a particular skin condition."

"ART. 5 . . . A contestant may have documentation from an appropriate health-care professional only indicating a specific condition such as a birthmark or other non-communicable skin conditions such as psoriasis and eczema, and that documentation is valid for the duration of the season. It is valid with the understanding that a chronic condition could become secondarily infected and may require re-evaluation."

Once a lesion is not considered contagious, it may be covered to allow participation.

DISCLAIMER: The National Federation of State High School Associations (NFHS) nor the Oregon School Activities Association (OSAA) shall not be liable or responsible, in any way, for any diagnosis or other evaluation made herein, or exam performed in connection therewith, by the above-named provider, or for any subsequent action taken, in whole or part, in reliance upon the accuracy or veracity of the information provided herein.



Oregon School Activities Association

25200 SW Parkway Avenue, Suite 1
Wilsonville, OR 97070

503.682.6722 FAX 503.682.0960 [http:// www.osaa.org](http://www.osaa.org)

The National Federation of State High School State Associations' (NFHS) Sports Medicine Advisory Committee has developed a medical release form for wrestlers to participate with skin lesion(s) as a suggested model you may consider adopting for your state. The NFHS Sports Medicine Advisory Committee conducted a survey among specialty, academic, public health and primary care physicians and reviewed extensively the literature available on the communicability of various skin lesions at different stages of disease and treatment. No definitive data exists that allow us to absolutely predict when a lesion is no longer shedding organisms that could be transmitted to another wrestler. Another finding from the survey was the significant differences that exist among physicians relating to when they will permit a wrestler to return to participation after having a skin infection.

Neither the NFHS nor the NFHS Sports Medicine Advisory Committee presumes to dictate to professionals how to practice medicine. Nor is the information on this form meant to establish a standard of care. The NFHS **SMAC** does feel, however, that the guidelines included on the form represent a summary consensus of the various responses obtained from the survey, from conversations and from the literature. The committee also **believes** that the components of the form are very relevant to addressing the concerns of coaches, parents, wrestlers and appropriate health-care professionals that led to the research into this subject and to the development of this form.

GOALS FOR ESTABLISHING A WIDELY USED FORM:

1. Protect wrestlers from exposure to communicable skin disorders. Although most of the skin lesions being discussed generally have no major long-term consequences and are not life threatening, some do have morbidity associated with them and student-athletes should be protected from contracting skin disorders from other wrestlers or contaminated equipment such as mats.
2. Allow wrestlers to participate as soon as it is reasonably safe for them and for their opponents and/or teammates using the same mat.
3. Establish guidelines to help minimize major differences in management among appropriate health-care professionals who are signing "return to competition forms." Consistent use of these guidelines should reduce the likelihood wrestlers catching a skin disease from participation and suffering from inequalities as to who can or cannot participate.
4. Provide a basis to support appropriate health-care professional decisions on when a wrestler can or cannot participate. This should help the appropriate health-care professional who may face incredible pressure from many fronts to return a youngster to competition ASAP. This can involve any student athlete who never wins a match or the next state champion with a scholarship pending.

IMPORTANT COMPONENTS FOR AN EFFECTIVE FORM:

1. Each state association needs to determine which health-care professional can sign off on this form.
2. Inclusion of the applicable NFHS wrestling rule so appropriate health-care professionals will understand that covering a contagious lesion is not an option that is allowed by rule. Covering a non-contagious lesion after adequate therapy to prevent injury to lesion is acceptable.
3. Inclusion of the date and nature of treatment and the earliest date a wrestler can return to participation. This should mitigate the need for a family to incur the expense of additional office visits as occurs when a form must be signed within three days of wrestling as some do.
4. Inclusion of a "bodygram" with front and back views should clearly identify the lesion in question. Using non-black ink to designate skin lesions should result in less confusion or conflict. Also including the number of lesions protects against spread after a visit with an appropriate health-care professional.
5. Inclusion of guidelines for minimum treatment before returning the wrestler to action as discussed above. This should enhance the likelihood that all wrestlers are managed safely and fairly.
6. Inclusion of all the components discussed has the potential to remove the referee from making a medical decision. If a lesion is questioned, the referee's role could appropriately be only to see if the coach can provide a fully completed medical release form allowing the wrestler to wrestle.

This form may be reproduced, if desired, and can be edited in any way for use by various individuals or organizations. ***It may also be modified and used for sports other than wrestling.*** In addition, the NFHS **SMAC** would welcome comments for inclusion in future versions, as this ***form will be reviewed yearly, and modified as needed.***

2022 WRESTLING LEAGUE / SPECIAL DISTRICT MEET DIRECTORS

<p>HIGHLIGHTED INFORMATION has NOT been verified. If there are any changes or corrections that need to be made to the information listed below please email them to Kathi, kathif@osaa.org. PLEASE IDENTIFY YOUR CLASSIFICATION & SPECIAL DISTRICT.</p>							
District	League Name	Date	Site	AD / Meet Director / TrackWrestling Operator	Host School	AD Work Phone	AD / DMD E-mail
6A-1	PIL	Feb 18-19	McDaniel HS	Djallo Lewis, PIL Tyler Kelleher, AD TBD, TrackWrestling Operator	McDaniel HS	(503)916-5220 x81410	helleher@pps.net
6A-2	METRO	February 19	Aloha HS	Tom Bendi, AD Troy Christiansen, Meet Director TBD, TrackWrestling Operator	Westview HS	503.356.3066	thomas_bendi@beaverton.k12.or.us troy_christiansen@beaverton.k12.or.us
6A-3	PACIFIC	February 18-19	Newberg HS	Tim Burke, AD / Meet Director Pam Sherman, TrackWrestling Operator	Newberg HS	503.554.4418	burke@newberg.k12.or.us pam.sherman80@gmail.com
6A-4	MT HOOD	February 18-19	Sandy HS	Garet Luebbert, AD Eric Stauffer, Meet Director Andrew Teth, TrackWrestling Operator	Sandy HS	503.668.8011 x7114	garet.luebbert@ortall.k12.or.us eric_stauffer@ddsds40.org
6A-5	THREE RIVERS	February 18-19	Oregon City HS	Andrew Jones, AD / Meet Director Bre McKay, TrackWrestling Operator	Oregon City HS	503.785.8739	andrew.jones@orecity.k12.or.us Brehays@gmail.com
6A-6	MOUNTAIN VALLEY	February 18-19	West Salem HS	Wendy Stadley, AD Jason Ebbs, Meet Director / TrackWrestling Operator	West Salem HS	503.399.5533	Stadley_wendy@salkeis.k12.or.us ebbs_jason@salkeis.k12.or.us
6A-7	SOUTHWEST	February 18-19	South Medford HS	Alex Roscher, AD Kathy Dungee, Meet Director James Monroe, TrackWrestling Operator	South Medford HS	541.842.1406	alex.roscher@medford.k12.or.us kdungee@grantspass.k12.or.us james.monroe@medford.k12.or.us
5A-1	NORTHWEST OREGON	February 11-12	Hillsboro HS	John Matsuo, AD Sally Bousios, Meet Director / TrackWrestling Operator Dennis Burke, Meet Director / TrackWrestling Operator	Hillsboro HS	503.844.1982	matsuoj@hsd.k12.or.us sbousios@gmail.com burked@vllw.k12.or.us
5A-2	MIDWESTERN	February 11-12	Eagle Point HS	Kacey McNulty, AD Heather Kerr, Meet Director / TrackWrestling Operator	Eagle Point HS	541.803.6609	mcnultyk@eaglept.k12.or.us dsh1k1@yahoo.com
5A-3	MID-WILLAMETTE	February 11-12	Salem Armony	Brodie Cavaille, AD Tony Matta, Meet Director / TrackWrestling Operator	North Salem HS	503.399.3274	cavaille_brodie@salkeis.k12.or.us tony.matta@philomath.k12.or.us
5A-4	INTERMOUNTAIN	February 12	Crook County	Rob Bonner, AD TBD, Meet Director Lisa Lawrence, TrackWrestling Operator	Crook County HS	541.416.6900 x3107	rob.bonner@crookcounty.k12.or.us dsh1k1@yahoo.com
4A-SD1	Special District 1	February 11-12	Molalla HS	Kristen Rott, AD Thomas Cousins, Meet Director McKienna Salvetti, TrackWrestling Operator	Molalla HS	503.759.7306	kristen.rott@molallark12.or.us cousinst@regonstate.edu mckenna.salvetti@molallark12.or.us
4A-SD2	Special District 2	February 11-12	Siuslaw HS	Chris Johnson, AD Neil Wartnik, Meet Director Jeff Drumm, TrackWrestling Operator	Siuslaw HS	541.997.3448	cjohnson@siuslaw.k12.or.us nwartnik@siuslaw.k12.or.us jdrummi@comcast.net
4A-SD3	Special District 3	Feb 11-12	Klamath Union HS	Scott Mason, AD TBD, TrackWrestling Operator	Klamath Union HS	541.883.4710 x3071	masons@klls.k12.or.us
4A-SD4	Special District 4	February 11-12	Sisters HS	Gary Thorson, AD TBD, Meet Director Lisa King, TrackWrestling Operator	Sisters HS	541.549.4050	gary.thorson@sds46.org dsh1k1@yahoo.com
3A-SD1	Special District 1	February 18-19	Nyssa HS	Jenna Ravenscraft, AD / Meet Director Luke Cleaver, TrackWrestling Operator	Nyssa HS	541.372.2287	jravenscraft@nyssasd.org lcleaver@nyssasd.org
3A-SD2	Special District 2	February 18-19	Yamhill Carlton HS	Scott Henderson, AD Carol Dauenhauer, Meet Director Keri Dauenhauer, TrackWrestling Operator	Yamhill Carlton HS	503.852.7600 x2014	henderson@yccschools.org cdauenhauer2@gmail.com kdauenhauer2@gmail.com
3A-SD3	Special District 3	February 18-19	Cascade Christian HS	Nate Mayben, AD	Cascade Christian HS	541.858.7253	nmayben@gracechristian.org

2022 WRESTLING LEAGUE / SPECIAL DISTRICT MEET DIRECTORS

HIGHLIGHTED INFORMATION has NOT been verified. If there are any changes or corrections that need to be made to the information listed below please email them to Kathi, kathif@osaa.org . PLEASE IDENTIFY YOUR CLASSIFICATION & SPECIAL DISTRICT.							
District	League Name	Date	Site	AD / Meet Director / TrackWrestling Operator	Host School	AD Work Phone	AD / DMD E-mail
2A/1A-SD1	Special District 1	February 18-19	Neah-Kah-Nie HS	Corey Douma, AD Chris Bennett, Meet Director Jamie Dixon, TrackWrestling Operator	Neah-Kah-Nie HS	503.355.2272	coreyd@nksd.org chrise@nksd.org
2A/1A-SD2	Special District 2	Feb 19	Lowell HS	Scott Yakovitch, AD TBD, TrackWrestling Operator	Lowell HS	(541)937-2124	syakovitch@lowell.k12.or.us
2A/1A-SD3	Special District 3	February 19	Myrtle Point HS	Jennifer Sproul, AD Tony Jones, Meet Director Debbie Helms, TrackWrestling Operator	Myrtle Point HS	541.572.1270	jsproul@mpsck12.or.us tjones@coquille.k12.or.us onefordeb@hotmail.com
2A/1A-SD4	Special District 4	February 19	Adrian HS	Aimee Espalin, AD / Meet Director TBD, TrackWrestling Operator	Adrian HS	541.372.2335 x3705	aimee_espalin@adriansd.org
6A/5A/4A/3A/2A/1A - SD1	Girls Special District 1	February 5	Century HS	Jeremy Corwin, AD TBD, TrackWrestling Operator	Century HS	503.844.1805	corwinj@hds.k12.or.us
6A/5A/4A/3A/2A/1A - SD2	Girls Special District 2	February 5	Cottage Grove HS	Garrett Bridgens, AD Rich Herzog, Meet Director Jeff Drumm, TrackWrestling Operator	Cottage Grove HS	541.942.3391 x2158	garrett.bridgens@siano.k12.or.us RichmondH@rfpsd.com jdrumm1@comcast.net
6A/5A/4A/3A/2A/1A - SD3	Girls Special District 3	February 5	Redmond HS	Sam Platt, AD TBD, TrackWrestling Operator	Redmond HS	541.504.3600	samuel.platt@redmondschools.org
6A/5A/4A/3A/2A/1A - SD4	Girls Special District 4	February 5	West Albany HS	Don Lien	West Albany HS	541.967.4545	don.lien@albany.k12.or.us

**OSAA / OnPoint Community Credit Union Wrestling District Meet
Public Address Script**

Good afternoon/evening and welcome to today's/tonight's _____ Wrestling District Meet.

NATIONAL ANTHEM

Ladies and Gentlemen, we now ask that you please stand and remove your hats as we honor America with the playing our National Anthem.

SPORTSMANSHIP (REQUIRED)

Every student performing here today has had dreams of being a star in their own right. What they never dreamed of, is being ridiculed or threatened for how they look, where they came from, how they worship, or who they love. And yet this happens repeatedly at sporting events across our state. We are better than this. As athletes. As fans. As Oregonians.

In sport, every participant must play by the same rules. Now, so does everyone in attendance at OSAA interscholastic events. Each of us is expected to encourage and contribute to an environment of SAFETY, TOLERANCE, ACCEPTANCE and RESPECT throughout the event. The OSAA calls it being a STAR. And if you can do it, consider yourself a STAR. If you can't, you'll find yourself on the outside looking in at this and potentially any future interscholastic events in Oregon.

We all have a role to play in making events like this a success. So, whether you're on the field or in the stands—play well, play hard, and play fair. Because Greatness...is Hateless.

OSAA SPONSOR ANNOUNCEMENTS

Sponsor announcements are for use during breaks in the action and can be read more than once.

1. Wearing a mask and keeping your distance from others helps prevent the spread of Covid-19. Please be courteous of those around you and help us keep each other safe.
2. OSAA dot org is the online home of the OSAA Wrestling State Championships. The official website of the OSAA has updated results, links to purchase tickets and souvenir merchandise, and historical Wrestling State Championships results. Be sure to visit OSAA dot org
3. OnPoint Community Credit Union is a proud sponsor of the OSAA State Championship. OnPoint is Oregon's largest locally headquartered credit union – serving more than 452,000 members. Federally insured by NCUA. Equal housing opportunity.
4. Stay connected to your favorite team with the OSAA Live mobile app. OSAA Live features the latest scores, schedules and rankings for all teams and leagues across Oregon. Purchase State Championship tickets. Access OSAA State Championship programs. Read the latest prep news and information. Search OSAA Live in the App Store or on Google Play to download today.
5. Purchase your official State Championships merchandise at OSAA store dot com. With RushTeamApparel, the exclusive merchandise partner of the OSAA, you have more options! Customize your gear with your school name, a student-athlete name, event decals, and more! Nike products are now also available. Browse the selection of official State Championships merchandise at OSAA store dot com.
6. Each of us is here to either compete in a sporting event, or to support those who are. An event in which the rules apply equally to everyone, designed to ensure fair competition, encourage sportsmanship, and bring out the best in each participant. We are here to share our support — for our students, our community, and for each other. And to create an environment of SAFETY, TOLERANCE, ACCEPTANCE and RESPECT. We call it being a STAR. Learn what it takes to be a STAR at O-S-A-A dot org slash equity.
7. The Army is the presenting sponsor of the OSAA Wrestling State Championships. With more the 150 career opportunities and money for college find out how you can be a part of a winning team. Learn more at go army dot com slash OSAA. The U.S. Army...National Champs since 1775.

8. Remember what high school activities are all about – participation, teamwork, effort and sacrifice. The OSAA and the participating schools encourage you to keep high school activities in the proper perspective by maintaining a positive attitude towards players, officials and the opposing team. Let's continue to show respect and sportsmanship throughout this contest and refrain from derogatory cheers, chants or behaviors. It's all about respect of the game, each other, and yourself.
9. For in-depth coverage of high school activities across the state, OSAA today is the answer. OSAA today has the latest news, stories, coaches polls and more. OSAA today features stories from around the state. Also, be sure to subscribe to the OSAA today Podcast wherever you get your podcasts! Visit OSAA dot org slash today!
10. A sponsor of OSAA State Championships, OnPoint provides our local communities with the banking and lending solutions they need to get ahead. Federally insured by NCUA. Equal housing opportunity.
11. Moda Health is a proud sponsor of O-S-A-A events because students who discover their strength through sports grow into healthy adults. Be Better. Moda Health.
12. High school students deserve the right to participate in sports and activities – the problem is that not every student or their family can afford the costs associated. The OSAA Foundation Student Assistance Program is here to help breakdown those barriers to allow students to learn the life long lessons you receive from participating. Visit o-s-a-a foundation dot org to find out how you can help.
13. Black Bear Diner, the OSAA's official family restaurant, where community connection and good food matter would like to celebrate and congratulate our athletes and families here today. When you're done here, be sure to feed your inner bear with huge portions of comfort food classics for breakfast, lunch and dinner! There's something for everyone at black bear diner. Dine in or order online for carryout or delivery at blackbeardiner.com.
14. For over forty years, Pacific Office Automation has remained locally owned and operated. They support the community and people and places that matter. That's why they continue to sponsor the OSAA year after year. To learn more, visit Pacific Office dot com. Pacific Office Automation – Problem Solved.
15. Nike is a proud sponsor of the OSAA Wrestling State Championships. Visit them online at nike dot com to see the latest in Nike gear.
16. As participants, coaches, fans, friends, and parents, we now have our own rules. Designed to ensure and encourage an atmosphere of SAFETY, TOLERANCE, ACCEPTANCE and RESPECT for all of us. We call it being a STAR, and it means not threatening or ridiculing anyone in attendance based on their race, gender, age, color, national origin, ethnicity, disability, sexual orientation or religion. Learn what it takes to be a STAR at O-S-A-A dot org slash equity.
17. Want to stay in shape, be involved in a sport you love and earn money in the process? Become an athletic official! There's a shortage of officials in Oregon and we need you now more than ever. Visit OSAA-dot-org backslash officials for more information and to get registered.

END OF MATCH ANNOUNCEMENT *(fill in blanks based on schedule below)*

The OSAA and title sponsor OnPoint Community Credit Union thanks you for your support of high school activities. The _____ Wrestling State Championship is February ____ at _____. Visit OSAA dot org for event information and to purchase tickets. Don't forget to visit OSAA store dot com to order official OSAA Wrestling State Championships merchandise. Please drive home safely.

- *Girls – February 24 at Culver High School*
- *2A/1A – February 26 at Culver High School*
- *3A – February 26 at La Pine High School*
- *4A – February 26 at Cascade High School*
- *5A – February 26 at Ridgeview High School*
- *6A – February 26-27 at Sandy High School*