



2022 WRESTLING STATE CHAMPIONSHIPS

6A – Sandy HS – Feb 26 and 27



ADMINISTRATIVE INFORMATION

Additional information available on the OSAA website, www.osaa.org/activities/wre

1. **EMERGENCY PLAN:** In the event of an emergency, natural disaster, fire, war, etc. that forces postponement or cancellation of an OSAA State Championship event, information will be posted to the home page of the OSAA website (www.osaa.org) and distributed to statewide media outlets.
2. **OSAA LIVE MOBILE APP:** www.osaa.org/app



The OSAA Live mobile app allows you to:

- Access **OSAA Championship game day information** – shop official merchandise and access championship programs.
- Follow your favorite teams
- Get updated schedules, scores, and rankings

Download the OSAA Live mobile app using the QR code above or find it in the App Store or in Google Play by searching for “OSAA Live”.

3. **TICKETS:** Tickets for the Wrestling State Championship will be distributed through the school via a pre-sale passcode provided by the OSAA. Each code will be valid for a specific number of tickets for each qualifying wrestler. Schools will have the option to disseminate those tickets to families to purchase or purchase the block in its entirety and be the source of distribution. Any tickets not purchased via the pre-order passcode will go live online to the general public 48 hours prior to the event (if available). Unlike in past years, additional tickets for warm up wrestlers, additional coaches, stat person etc. will not be available, that access will need to be included in your allotment. A school’s athletic director will be contacted with their school’s code as the events are created.
4. **EXPENSES:** www.osaa.org/docs/forms/ReimbursementFormula.pdf

Team expenses will be paid by check at the conclusion of the winter sports season according to the 2021-22 Reimbursement Formula.

5. **RULE 3 – CONTESTS – SPORTSMANSHIP – CROWD CONTROL** (OSAA Handbook, Rules)
6. **STATE CHAMPIONSHIPS – BROADCASTING/STREAMING** (OSAA Handbook, Executive Board Policies) ([OSAA for Media](#)) (Revised July 2019)
 - A. The OSAA owns the broadcasting / streaming rights to all state championship events, first round through the championship finals. Radio and television stations, cable companies, websites and social media accounts planning to broadcast / stream games in any round of the OSAA state championships must register with the OSAA by submitting an online Registration Form. Registered and approved broadcasts / streams will be listed on the OSAA State Championship Broadcast Schedule. Those not listed will not be allowed.
 - B. For OSAA state championship events hosted by member schools, it shall be the responsibility of those registered and approved to contact the host school's athletic director to arrange for space, power and Internet access if available. The OSAA will coordinate these arrangements at all final sites and semifinal sites for football only.
 - C. NOTE: The NFHS Network is the exclusive video broadcast rights holder of OSAA state championship events. Live and on-demand video of OSAA state championship events (full or condensed versions) is strictly prohibited and in direct violation of the OSAA's agreement with the NFHS Network. Those registered and approved for broadcasting / streaming state championship events declined by the NFHS Network shall pay a rights fee to the OSAA.
 - D. Video highlights are limited to a total of two minutes per game, including broadcasts, streams and social media posts.

7. **STATE CHAMPIONSHIPS – VIDEOTAPING** (OSAA Handbook, Executive Board Policies) ([OSAA for Media](#)) (Revised July 2019)

Recording video of state championships from seating area is allowed provided the view of spectators is not obstructed. Use of a tripod in seating area is prohibited due to safety reasons. An official school video recorder, identified prior to an OSAA state championship event by the head coach or athletic director of a participating school, will be allowed in a designated area established by the OSAA.

NOTE: Recording video is for private use only. Broadcasting or streaming video - live or delay - is prohibited unless an online registration form has been submitted and approved by the OSAA. Those approved for broadcasting / streaming OSAA state championship events declined by the NFHS Network shall pay a rights fee to the OSAA.

COACH / TEAM INFORMATION

Additional information available on the OSAA website, www.osaa.org/activities/wre

PRE-STATE CHAMPIONSHIPS:

1. **LEAGUE / SPECIAL DISTRICT MEET ENTRY LIMITATIONS:** Participating schools are allowed a maximum of two entries in each weight class into the qualifying meet.
2. **PRE-STATE CHAMPIONSHIP POSTINGS:** www.osaa.org/activities/wre
 - A. All entries will be posted on the website on **Sunday, February 20, by 6pm.**
 - B. **CORRECTIONS ONLY:** (*spelling, grade, school, etc.*) Contact Brad Garrett, 503.682.6722 x229, toll free 1.888.838.6722 or via email bradg@osaa.org
3. **CHAMPIONSHIP QUALIFICATIONS**
 - A. **6A – 24-person OSAA bracket**
 - 1) **Automatic Qualifiers:** Twenty-one individuals will automatically qualify for the OSAA’s 24-person bracket in each of the 14 weight classes. Each league determines how they will select their allotted playoff spots. PIL – 3; Metro – 3; Pacific – 3; Mt Hood – 3; Three Rivers – 3; Mountain Valley – 3; Southwest – 3
 - 2) **Cutoff Date:** The automatic qualifiers must be determined by 10pm on **Saturday, February 19.** Once the qualifiers are determined, the fourth-place finisher from each league will be “pooled” and a defined criterion applied to select three additional qualifiers.
4. **VACANT ENTRY ROTATION:** If a qualifying tournament is unable to provide the allocated number of entries by the established entry deadline in a weight class the vacant entry will be awarded to another tournament based on the rotation outlined below. Alternate positions will be rotated annually.

	Alternate 1	Alternate 2	Alternate 3	Alternate 4	Alternate 5	Alternate 6	Alternate 7
6A	SD 3	SD 4	SD 5	SD 6	SD 7	SD 1	SD2
5A	SD 2	SD 3	SD 4	SD 5			
4A	SD 1	SD 2	SD 3	SD 4			
3A	SD 1	SD 2	SD 3				
2A/1A	SD 3	SD 4	SD 1	SD 2			
Girls	SD 4	SD 3	SD 2	SD 1			

5. **STATE CHAMPIONSHIPS – INDIVIDUAL SPORT SUBSTITUTIONS** (*OSAA Handbook, Executive Board Policies*) (*Revised Winter 2015*)
 - A. The following shall be the policy for substitutions in individual sport State Championship events. All individuals who are substitutes for individual qualifiers must have participated in a District or Special District Meet.
 - G. **Wrestling**
 - 1) **Individuals:** Substitutions may be made by the League / Special Meet Director until 4pm two business days prior to the first day of state championship competition. Girls Championship (**Monday, February 22**) and all other Championships (**Wednesday, February 24**)
 - 2) A one-point team penalty shall be assessed to any team failing to bring a participant who has qualified through the League / Special District Meet to the state championships, unless that participant was replaced prior to the substitution deadline. This penalty applies to each participant failing to appear at the state championships.

Schools are required to notify the OSAA prior to the start of a state championship event if a student entered in the event will be unable to compete for any reason. **The Meet Director or the school’s Athletic Director or coach must notify the OSAA office, Brad Garrett, 503.682.6722 x229.**

6. **WITHDRAWAL FROM STATE CHAMPIONSHIPS** (*OSAA Handbook, Executive Board Policies*) (*Revised Fall 2008*)

By entering participants in a state championship meet, contest or tournament, each member school certifies that, barring injury, illness or unforeseen events, or a withdrawal to avoid violating the religious convictions of team members, the team or individuals representing the school will participate in every game or competition, that is part of that championship event, until the final conclusion of the meet, contest or championship. Any withdrawal or intentional forfeiture for reasons other than those specified

shall be considered a sportsmanship violation, and shall be subject to reprimand and/or other penalties as determined by the Executive Board. See [Executive Board Policies, "Withdrawal During a Competition"](#) for more information.

STATE CHAMPIONSHIPS

- 1. LEAGUE REPRESENTATIVE MEETING** - All districts are encouraged to have a coaches' meeting prior to the Wrestling State Championships in which the latest issues and concerns are discussed. Each district should have a designated coaches' representative and representatives should bring their district's issues to the League Representative Coaches Meeting, Tuesday, February 22, at 7pm. League Representatives should also bring the name of their district's choice for Coach of the Year for balloting purposes. The meeting will be conducted via Zoom and can be accessed using the information below.

One tap mobile: US: +12532158782,,87011843835# or +13462487799,,87011843835#
 Meeting URL: <https://us02web.zoom.us/j/87011843835>
 Meeting ID: 870 1184 3835

- 2. TEAM PASSES:** Each school packet will contain participant passes for all wrestlers that qualify. The chart below will determine the number of coaches' passes:

Qualifying Wrestlers	1 - 3	4 - 7	8 - 11	12 - 15	16+
Coaches Passes	2	3	4	5	6

NOTE: No additional Coaches or Wrestler passes will be sold at host sites.

- 3. COACH & ATHLETE CONDUCT:**

- Coaches, please talk to your athletes about expectations, behavior and conduct while you are guests at the Host Site. Please take care of the facility.
- Coaches are expected to conduct themselves with decorum at all times during the tournament and to remain in assigned areas. They shall not be permitted on the mats or in the mat area unless participating. Each school that has a contestant shall have a coach in attendance.

- 4. PRACTICE:** There will be no practice time allotted at Host Sites. Coaches must make their own arrangements for workouts prior to the event.

- 5. WEIGH-INS:** (*excerpt 2021-22 NFHS Wrestling Rules Book, Rule 4-5*)

- "Article 2 . . . Contestants shall have the opportunity to weigh-in shoulder-to-shoulder or by team(s) at the tournament site a maximum of two hours before the first session of each day.
- "ART. 3 . . . For any event, all contestants shall be present in and remain in the designated weigh-in area at the time established by the meet administration. Contestants shall not leave the designated weigh-in area unless permission is granted by the meet administration. Dual meet weigh-in shall proceed through the weight classes beginning with the random draw selected weight class, continue through the weight classes, wrap around to the 106-pound weight class and end immediately upon the completion of the highest weight class preceding the random draw selected weight class. When all wrestlers for a weight class have had an opportunity to weigh in and the next class is called, that weight class is closed. Tournament weigh-in may proceed by team(s) with the lowest weight class to the highest and end immediately upon the completion of the highest weight class. A contestant shall weigh in for only one weight class during the weigh-in period. If only one scale is available, a contestant may step on and off that scale two times to allow for mechanical inconsistencies in the scale. If multiple scales are available, a contestant may step on and off the first scale two times to allow for mechanical inconsistencies in that scale. If the contestant fails to make weight on the first scale, the contestant shall immediately step on each available scale one time in an attempt to make weight. During time off the scale(s), activities that promote dehydration, **weight loss or weight gain** are prohibited."

NOTE: Any wrestler choosing to challenge available scales will not be allowed to leave the weigh-in area until the challenge is concluded. Wrestlers are not allowed to remove clothing prior to or during the challenge process. Participation in dehydration activities will not be allowed.

The OSAA representative (or his designee) at the competition has the authority and responsibility to determine if the competition rules have been violated.

- 6. SKIN, GROOM AND WEIGH-IN SCHEDULE**

<u>Date</u>	<u>Classification</u>	<u>Skin and Groom</u>	<u>Weigh-in</u>	<u>Start Time</u>	<u>Location</u>
Saturday, Feb 26	6A	7:00am	7:15am	9:00am	Sandy HS
Sunday, Feb 27	6A	7:00am	7:15am	9:00am	Sandy HS

NOTE: There will be no night before weigh-ins at the Wrestling State Championship site; all wrestlers will be required to have PHOTO ID (student body card, driver's license, etc.) and WEIGH-IN CARD (issued in each team packet) to participate in the weigh-in process.

7. **SKIN DISEASE:** The following communicable skin lesion(s) procedures are in effect: Before a wrestler with a communicable skin lesion(s) is allowed to compete, the following steps shall be completed:
- A. Wrestlers shall see an appropriate health-care professional and have the skin lesion(s) evaluated using the "OSAA Medical Release for Wrestler to Participate with Skin Lesion" form.
 - B. Appropriate health-care professional shall include the following information in the evaluation:
 - 1) Date and nature of the treatment.
 - 2) Earliest date the wrestler can return to participation.
 - 3) A "bodygram" with front and back views that clearly identifies the lesion(s) in question.
 - 4) Minimum guidelines for treatment before returning to participation.
 - C. Also in effect:
 - 1) Medical authorizations to compete expire 14 days from date of examination.
 - 2) Wrestlers shall be prepared to provide the required form as per NFHS Rule 4-2-3 at the scale.
 - 3) Excerpt from NFHS 2021-22 Wrestling Rules Book, Rule 4-2-4 – "If a designated, on-site appropriate health-care professional is present, he / she may overrule the diagnosis of the appropriate health-care professional signing the medical release form for a wrestler to participate or not participate with a particular skin condition."
8. **STATE CHAMPIONSHIPS – MEDICAL CHAIN OF COMMAND** (*OSAA Handbook, Executive Board Policies*) (Effective Fall 2012)
- The OSAA provides an official medical team that consists of State of Oregon registered athletic trainers and/or licensed physicians at state championship events administered by OSAA staff whenever possible. If provided, this OSAA designated medical team shall have final authority on all injury evaluations, participation status and return-to-play decisions.
9. **MAT SIDE:** Only two coaches will be allowed at the mat side. **ABSOLUTELY NO ONE WILL BE ALLOWED ON THE FLOOR AT MAT SIDE EXCEPT THE WRESTLERS ON THE MAT AND THE TWO COACHES SEATED ON THEIR CHAIRS.** No photographers, trainers, etc. from the school will be allowed at mat side unless they occupy one of the two chairs.
10. **"AS AVAILABLE" STAGING PROCEDURES:** Bouts at all classification levels will be assigned on an "as available" basis to a predetermined block of mats. Staging screens will show real time mat assignments for all classification levels. These screens will be located in the warm-up area. Coaches and wrestlers share in the responsibility to report the warm-up room with adequate time to prepare for their next match – weight classes will not be called to staging.
11. **AWARDS:** Team trophies will be presented at the conclusion of the event on Saturday evening. Individual medals will be presented to the top placers in each classification following the championship match in each weight class.
- A. **Trophies:** Champion through fourth place trophies will be presented to the top teams in each classification.
 - B. **Medals:** Individual medals will be presented to the top six finishers in each weight class at the 6A, 5A, 4A classifications and Girls Division, and the top four finishers at the 3A, 2A/1A classifications.
 - C. **Moda Athlete of the Meet:** The top wrestler in each classification will be recognized as that classification's Moda Athlete of the Meet. The following criteria will be used to determine the top wrestler:
 - 1) Number of State Championships
 - 2) Points scored in the tournament
 - 3) Higher team score
 - 4) Year in school
- The winners will be announced over the PA and will receive a commemorative coin from Moda Health and a scholarship application during the award ceremony. If not handed out, it will be mailed to the school athletic director the week following the championship.*

12. **STATE CHAMPIONSHIP RESULTS:** www.osaa.org/activities/wre

Championship and consolation brackets will be continuously updated during the championships. Team standings for each classification will be posted at the end of each evening. Please instruct your fans and local media to go there for results.

SOUVENIR INFORMATION

Additional information available on the OSAA website, www.osaa.org/shop

1. STATE CHAMPIONSHIPS MERCHANDISE: www.osaastore.com

A. Pre-Order: osaa.rushteamapparel.com/osaa/pre-orders/

RushTeamApparel, exclusive merchandise partner of the OSAA, offers pre-orders. Pre-orders will typically open one full week before the Friday of the start of the event and remain open until the Wednesday prior to the event weekend at noon. Select garments are available for pre-order: sweatshirts, t-shirts, long sleeve t-shirts, sweatpants, patches, pins, beanies and various Nike products. Merchandise will be available for pick up at the RushTeamApparel booth throughout the event.

B. Championship Site: RushTeamApparel will be onsite at the OSAA state championship with a wide variety of souvenir merchandise. Stop by the merchandise booth to purchase t-shirts, sweatshirts, letterman patches, sweatpants, hats and much more. RushTeamApparel also offers a wide variety of customization options including school name, student-athlete name, event decals and more!

C. Official Letterman Patches: Get your official OSAA State Championship letterman patch onsite or by ordering online. Forget to get one last year? You can order an official letterman patch for any year going back to 2014-2015 in any OSAA activity by ordering online.

D. RushTeamApparel Contact Information: RushTeamApparel is the exclusive merchandise partner of the OSAA. For more information, contact RushTeamApparel at 1.253.858.5288 or via email at orders@rushteamapparel.com.

2. NORTHWEST SPORTS PHOTOGRAPHY (NSP): www.4nsp.com

A. Action and Awards Photos: NSP will shoot action photos during matches and award photos on Thursday (Girls), Saturday (all sites), and Sunday (6A). Single day events will have the photos available online at 4NSP.com. Saturday photos for 6A will be available on-site on Sunday for purchase, while Sunday's 6A photos will only be available online.

B. NSP Contact Information: NSP is the official photographer of the OSAA. For more information, contact NSP at 800.446.5758 or via email at customerservice@4nsp.com.

3. NFHS NETWORK: <http://www.nfhsnetwork.com/osaa>

The NFHS Network will stream video of all matches. Subscription is \$10.99 per month. Events are archived for on demand viewing. Purchase a digital copy at the link above.

4. OSAA DIGITAL CHAMPIONSHIP PROGRAMS: www.osaa.org/programs



The Official Wrestling State Championship program will be available Wednesday, February 23. The program includes brackets for all weight classes at each classification, historical state championship records and a color map of all OSAA member schools.

Programs are available on the OSAA Live mobile app and online. Download the OSAA Live mobile app from the App Store or Google Play by searching for "OSAA Live".

5. MINI REPLICA TROPHIES: www.osaa.org/shop#trophies

A. Mini Replica Trophies: The OSAA is proud to be able to offer mini replicas of the trophies presented at the OSAA State Championships. Mini replica trophies are 8" tall x 10" wide x 5" deep and make a great gift for coaches, students, parents, etc. Mini replicas can be produced for teams and individuals for any year in any OSAA activity. Each mini replica trophy is \$70 and that includes a personalized nameplate, shipping & handling. Order mini replica trophies online.

B. Crown Trophy Contact Information: Crown Trophy manages the mini replica trophy program. For more information, contact Crown Trophy at 503.626.1125 or via email at awardpro@crowntrophy41.com.

The OSAA is Proud to Partner with the following organization

1. Abby's Legendary Pizza: <https://abbys.com/>

With our large, open seating, Abby's is a winning choice for teams traveling throughout Oregon and central Washington. Print out and bring this document in with your team of five or more athletes and we'll take 20% off your total order of food and drinks. Dine-in only, please. Excludes any other discount or promotion. Participating locations. For a complete list of our locations nearest your next game, visit our website. Call ahead and we'll have your order ready!



2022 WRESTLING STATE CHAMPIONSHIPS



Girls – Culver HS – Thursday, February 24
6A – Sandy HS – Saturday / Sunday, February 26-27
5A – Ridgeview HS – Saturday, February 26
4A – Cascade HS – Saturday, February 26
3A – La Pine HS – Saturday, February 26
2A/1A – Culver HS – Saturday, February 26

IMPORTANT

IMPORTANT

IMPORTANT

IMPORTANT

IMPORTANT

1. QUALIFYING PROCEDURES:

- A. All contestants shall weigh in wearing a legal competition uniform, without modifications, and without shoes and ear guards, suitable undergarment that completely covers the buttocks and the groin area. Female contestants must also wear a suitable undergarment that covers their breasts.
- B. No clothing other than a legal competition uniform will be allowed in the weigh-in area. Wrestlers should be prepared to leave all other gear (warm-ups, additional clothing, bags, etc.) with a member of the schools coaching staff prior to entering the staging area.
- C. No food or drink will be allowed in the staging or weigh-in area.
- D. Weigh-in/Skin and Groom:
 - 1) See administrative information for details on weigh-in times for your location.
- E. Wrestlers must be present inside the weigh-in area at the skin and groom check times indicated above. Each wrestler must have photo identification and weigh-in card to qualify.
- F. Once participants enter the weigh-in area and skin and groom checks initiated, they will not be allowed to leave unless they have met one of the following conditions.
 - 1) They have made weight and qualified for the tournament. *
 - 2) They have a current or suspected “skin lesion” and must be evaluated by the designated on-site medical staff. Participants with current “skin lesions” will be required to have an evaluation of the condition recorded on the OSAA Physicians Release form (included in your packet). No other forms will be accepted.
 - 3) They have not qualified for the tournament.
 - 4) They are escorted by Tournament staff member or designee.

***If a participant qualifies for the tournament their actual weight will be recorded on the shoulder.**

2. WEIGH-IN PROCEDURES:

- A. Wrestlers will be grouped by weight class. Weight classes will weigh-in starting with the 106 the 113 and 120, etc. and conclude when the last 285 lb. qualifier has had the opportunity to make weight.

Note: Tournament staff members will coordinate the weight classes in this area.
- B. Hair, skin and nails will be checked prior to qualifying.
- C. When all participants that are present in a weight class have had the opportunity to qualify any participant(s) not present will be called to the scale.
- D. If the participant fails to report immediately, a second verbal call will be made over the public-address system.
- E. Participant(s) not reporting immediately to the weigh-in area will not be allowed to qualify.
- F. Challenges will begin immediately once a wrestler fails to qualify. Any challenge to available scales will follow NFHS Wrestling Rule 4-5-3.
- G. Qualifying wrestlers will present weigh-in card to tournament staff to exit the weigh-in area.

3. PARTICIPANT REMINDERS:

- A. Bring Photo ID.
- B. Use the restroom before entering the weigh-in area. This may save you the time of having to use the “challenge” process to qualify.
- C. If you have a skin lesion have your “OSAA Physicians Release Form” that includes a “body diagram” available for tournament staff evaluating hair, skin and nails.
- D. Warm-up is not allowed inside the facility until notification by the tournament director.



Oregon School Activities Association

25200 SW Parkway Avenue, Suite 1
Wilsonville, OR 97070

503.682.6722 FAX 503.682.0960 http:// www.osaa.org

MEDICAL RELEASE FOR WRESTLER TO PARTICIPATE WITH SKIN LESION

Name (Must be Legible): _____

Date of Exam: ___ / ___ / ___

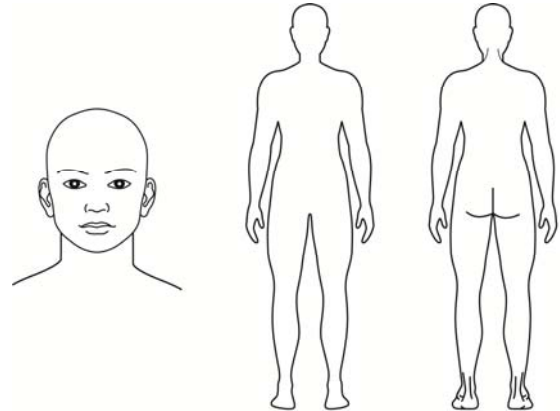
Diagnosis: _____

Mark Location AND Number of Lesion(s)

Location AND Number of Lesion(s): _____

Medication(s) used to treat lesion(s): _____

Date Treatment Started: ___ / ___ / ___



NOTE: Medical authorizations to compete expire 14 calendars days from date of examination.

Earliest Date may return to participation: ___ / ___ / ___

Provider Signature: _____

Office Phone #: _____

Provider Name (Must be Legible): _____
Physician (M.D. / D.O), Physician Assistant (PA) or Nurse Practitioner

Office Address: _____

Below are some treatment guidelines that suggest MINIMUM TREATMENT before return to wrestling:

Bacterial Diseases (impetigo, boils): To be considered "non-contagious," all lesions must be scabbed over with no oozing or discharge and no new lesions should have occurred in the preceding 48 hours. Oral antibiotic for 72 hours is considered a minimum to achieve that status. If new lesions continue to develop or drain after 72 hours, MRSA (Methicillin Resistant Staphylococcus Aureus) should be considered.

Herpetic Lesions (Simplex, fever blisters/cold sores, Zoster, Gladiatorum): To be considered "non-contagious," all lesions must be scabbed over with no oozing or discharge and no new lesions should have occurred in the preceding 72 hours. For a first episode of Herpes Gladiatorum, wrestlers should be treated and not allowed to compete for a minimum of 10 days. If general body signs and symptoms like fever and swollen lymph nodes are present, that minimum period of treatment before return to wrestling should be extended to 14 days. Recurrent outbreaks require a minimum of 120 hours of oral anti-viral treatment, again so long as no new lesions have developed and all lesions are scabbed over.

Tinea Lesions (ringworm scalp, skin): Oral or topical treatment for 72 hours on skin and oral treatment for 14 days on scalp.

Scabies, Head Lice: 24 hours after appropriate topical management.

Conjunctivitis (Pink Eye): 24 hours of topical or oral medication and no discharge.

Molluscum Contagiosum: Upon treatment with curettage and hyfrecator, may cover with bioocclusive and wrestle immediately.

Note to Appropriate Health-Care Professionals: Non-contagious lesions do not require treatment prior to return to participation (e.g. eczema, psoriasis, etc.). Please familiarize yourself with NFHS Wrestling Rules 4-2-3, 4-2-4 and 4-2-5 which states:

"ART. 3 . . . If a participant is suspected by the referee or coach of having a communicable skin disease or any other condition that makes participation appear inadvisable, the coach shall provide current written documentation as defined by the NFHS or the state associations, from an appropriate health-care professional stating that the suspected disease or condition is not communicable and that the athlete's participation would not be harmful to any opponent. This document shall be furnished at the weigh-in for the dual meet or tournament. The only exception would be if a designated, on-site meet appropriate health-care professional is present and is able to examine the wrestler either immediately prior to or immediately after the weigh-in. Covering a communicable condition shall not be considered acceptable and does not make the wrestler eligible to participate."

"ART. 4 . . . If a designated on-site meet appropriate health-care professional is present, he/she may overrule the diagnosis of the appropriate health-care professional signing the medical release form for a wrestler to participate or not participate with a particular skin condition."

"ART. 5 . . . A contestant may have documentation from an appropriate health-care professional only indicating a specific condition such as a birthmark or other non-communicable skin conditions such as psoriasis and eczema, and that documentation is valid for the duration of the season. It is valid with the understanding that a chronic condition could become secondarily infected and may require re-evaluation."

Once a lesion is not considered contagious, it may be covered to allow participation.

DISCLAIMER: The National Federation of State High School Associations (NFHS) nor the Oregon School Activities Association (OSAA) shall not be liable or responsible, in any way, for any diagnosis or other evaluation made herein, or exam performed in connection therewith, by the above-named provider, or for any subsequent action taken, in whole or part, in reliance upon the accuracy or veracity of the information provided herein.



Oregon School Activities Association

25200 SW Parkway Avenue, Suite 1

Wilsonville, OR 97070

503.682.6722 FAX 503.682.0960 [http:// www.osaa.org](http://www.osaa.org)

The National Federation of State High School State Associations' (NFHS) Sports Medicine Advisory Committee has developed a medical release form for wrestlers to participate with skin lesion(s) as a suggested model you may consider adopting for your state. The NFHS Sports Medicine Advisory Committee conducted a survey among specialty, academic, public health and primary care physicians and reviewed extensively the literature available on the communicability of various skin lesions at different stages of disease and treatment. No definitive data exists that allow us to absolutely predict when a lesion is no longer shedding organisms that could be transmitted to another wrestler. Another finding from the survey was the significant differences that exist among physicians relating to when they will permit a wrestler to return to participation after having a skin infection.

Neither the NFHS nor the NFHS Sports Medicine Advisory Committee presumes to dictate to professionals how to practice medicine. Nor is the information on this form meant to establish a standard of care. The NFHS **SMAC** does feel, however, that the guidelines included on the form represent a summary consensus of the various responses obtained from the survey, from conversations and from the literature. The committee also **believes** that the components of the form are very relevant to addressing the concerns of coaches, parents, wrestlers and appropriate health-care professionals that led to the research into this subject and to the development of this form.

GOALS FOR ESTABLISHING A WIDELY USED FORM:

1. Protect wrestlers from exposure to communicable skin disorders. Although most of the skin lesions being discussed generally have no major long-term consequences and are not life threatening, some do have morbidity associated with them and student-athletes should be protected from contracting skin disorders from other wrestlers or contaminated equipment such as mats.
2. Allow wrestlers to participate as soon as it is reasonably safe for them and for their opponents and/or teammates using the same mat.
3. Establish guidelines to help minimize major differences in management among appropriate health-care professionals who are signing "return to competition forms." Consistent use of these guidelines should reduce the likelihood wrestlers catching a skin disease from participation and suffering from inequalities as to who can or cannot participate.
4. Provide a basis to support appropriate health-care professional decisions on when a wrestler can or cannot participate. This should help the appropriate health-care professional who may face incredible pressure from many fronts to return a youngster to competition ASAP. This can involve any student athlete who never wins a match or the next state champion with a scholarship pending.

IMPORTANT COMPONENTS FOR AN EFFECTIVE FORM:

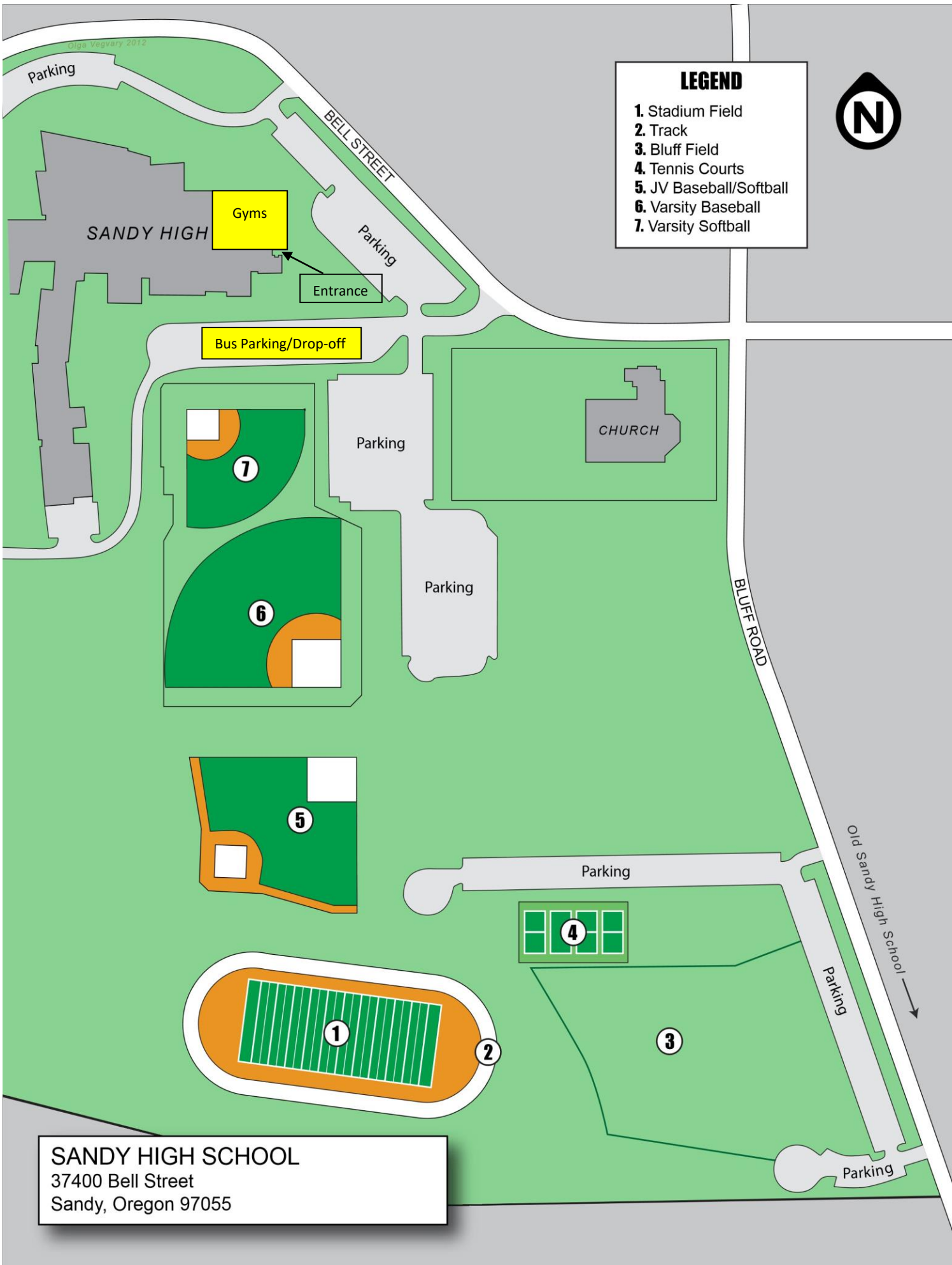
1. Each state association needs to determine which health-care professional can sign off on this form.
2. Inclusion of the applicable NFHS wrestling rule so appropriate health-care professionals will understand that covering a contagious lesion is not an option that is allowed by rule. Covering a non-contagious lesion after adequate therapy to prevent injury to lesion is acceptable.
3. Inclusion of the date and nature of treatment and the earliest date a wrestler can return to participation. This should mitigate the need for a family to incur the expense of additional office visits as occurs when a form must be signed within three days of wrestling as some do.
4. Inclusion of a "bodygram" with front and back views should clearly identify the lesion in question. Using non-black ink to designate skin lesions should result in less confusion or conflict. Also including the number of lesions protects against spread after a visit with an appropriate health-care professional.
5. Inclusion of guidelines for minimum treatment before returning the wrestler to action as discussed above. This should enhance the likelihood that all wrestlers are managed safely and fairly.
6. Inclusion of all the components discussed has the potential to remove the referee from making a medical decision. If a lesion is questioned, the referee's role could appropriately be only to see if the coach can provide a fully completed medical release form allowing the wrestler to wrestle.

This form may be reproduced, if desired, and can be edited in any way for use by various individuals or organizations. ***It may also be modified and used for sports other than wrestling.*** In addition, the NFHS **SMAC** would welcome comments for inclusion in future versions, as this ***form will be reviewed yearly, and modified as needed.***

Diigo - Vegetary 2012

LEGEND

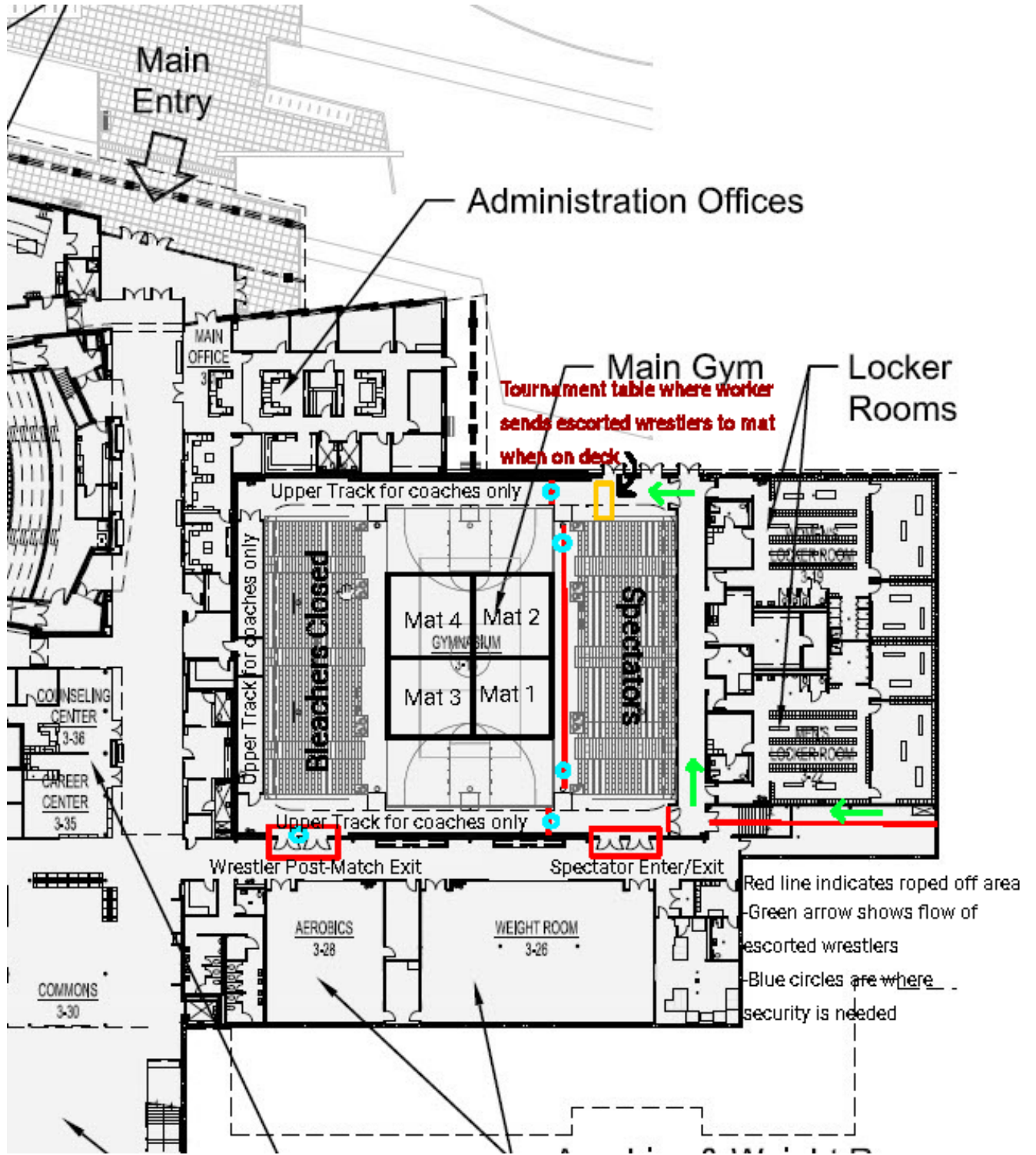
- 1. Stadium Field
- 2. Track
- 3. Bluff Field
- 4. Tennis Courts
- 5. JV Baseball/Softball
- 6. Varsity Baseball
- 7. Varsity Softball



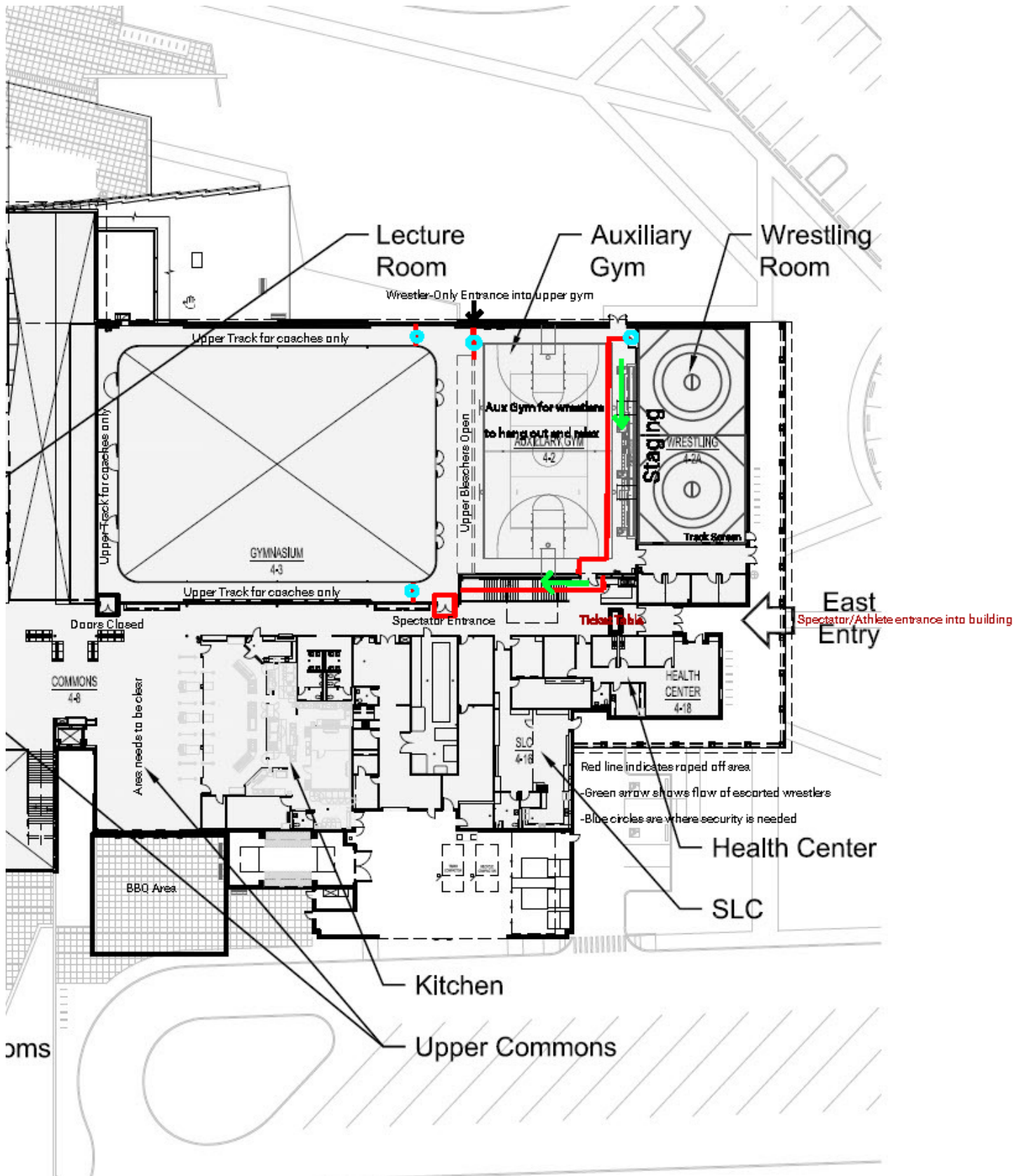
SANDY HIGH SCHOOL
 37400 Bell Street
 Sandy, Oregon 97055

Sandy High School Site Map

Ground Level



Sandy High School Site Map



2022 OSAA/OnPoint Community Credit Union 6A Wrestling State Championships

Participant Entrance Opens - 6:30am

Public Entrance Opens - 8:00am

Note: There are no pre-assigned mats and round times listed are tentative. Adjustments to this schedule can be made by the Tournament Committee at any time. Wrestlers not reporting for a match are subject to enforcement of NFHS Wrestling Rule 10-2-2

Saturday, February 26

TIME	Mat 1	Mat 2	Mat 3	Mat 4
9:00 AM	CHAMPIONSHIP ROUND 1 BOUTS 1-112			
9:07 AM				
9:14 AM				
9:21 AM				
9:28 AM				
9:35 AM				
9:42 AM				
9:49 AM				
9:56 AM				
10:03 AM				
10:10 AM				
10:17 AM				
10:24 AM				
10:31 AM				
10:38 AM	CHAMPIONSHIP ROUND 2 BOUTS 113-224			
10:45 AM				
10:52 AM				
10:59 AM				
11:06 AM				
11:13 AM				
11:20 AM				
11:27 AM				
11:34 AM				
11:41 AM				
11:48 AM				
11:55 AM				
12:02 PM				
12:09 PM				
12:16 PM	CONSOLATION ROUND 2 BOUTS 225-336			
12:23 PM				
12:30 PM				
12:37 PM				
12:44 PM				
12:51 PM				
12:58 PM				
1:05 PM				
1:12 PM				
1:19 PM				
1:26 PM				
1:33 PM				
1:40 PM				
1:47 PM				
1:54 PM	CONSOLATION ROUND 3 BOUTS 337-392			
2:01 PM				
2:08 PM				
2:15 PM				
2:22 PM				
2:29 PM				
2:36 PM				
2:43 PM				
2:50 PM				
2:57 PM				
3:04 PM				
3:11 PM				
3:18 PM				
3:25 PM				
3:32 PM	CONSOLATION ROUND 3 BOUTS 337-392			
3:39 PM				
3:46 PM				
3:53 PM				
4:00 PM				
4:07 PM				
4:14 PM				
4:21 PM				
4:28 PM				
4:35 PM				
4:42 PM				
4:49 PM				
4:56 PM				
5:03 PM				
5:10 PM				
5:17 PM				
5:24 PM				
5:31 PM				
5:38 PM				
5:45 PM				
5:52 PM				
5:59 PM				
6:06 PM				
6:13 PM				
6:20 PM				
6:27 PM				
6:34 PM				
6:41 PM				
6:48 PM	CONSOLATION ROUND 3 BOUTS 337-392			
6:55 PM				
7:02 PM				
7:09 PM				
7:16 PM				
7:23 PM				
7:30 PM				
7:37 PM				
7:44 PM				
7:51 PM				
7:58 PM				
8:05 PM				
8:12 PM				
8:19 PM				

Sunday, February 27

TIME	Mat 1	Mat 2	Mat 3	Mat 4				
9:00 AM	CHAMPIONSHIP QF BOUTS 393-448							
9:07 AM								
9:14 AM								
9:21 AM								
9:28 AM								
9:35 AM								
9:42 AM								
9:49 AM								
9:56 AM								
10:03 AM								
10:10 AM								
10:17 AM								
10:24 AM								
10:31 AM								
10:38 AM	CONSOLATION ROUND 4 BOUTS 449-504							
10:45 AM								
10:52 AM								
10:59 AM								
11:06 AM								
11:13 AM								
11:20 AM								
11:27 AM								
11:34 AM								
11:41 AM								
11:48 AM								
11:55 AM								
12:02 PM								
12:09 PM								
12:17 PM	CHAMPIONSHIP SF BOUTS 533-560		CONSOLATION QF BOUTS 505-506					
12:25 PM								
12:33 PM								
12:41 PM								
12:49 PM								
12:57 PM								
1:05 PM								
1:13 PM								
1:21 PM								
1:29 PM								
1:37 PM								
1:45 PM								
1:53 PM								
2:01 PM								
2:09 PM	CONSOLATION SF BOUTS 561-588							
2:17 PM								
2:25 PM								
2:33 PM								
2:41 PM								
2:49 PM								
2:57 PM								
3:05 PM								
3:13 PM								
3:21 PM								
3:29 PM					THIRD PLACE BOUTS 589-616		FIFTH PLACE	
3:37 PM								
3:45 PM								
3:53 PM								
4:01 PM								
4:09 PM								
4:17 PM								
6:00 PM	FINALS BOUTS 617-630							
6:10 PM								
6:20 PM								
6:30 PM								
6:40 PM								
6:50 PM								
7:00 PM								
7:10 PM								
7:20 PM								
7:30 PM								
7:40 PM								
7:50 PM								
8:00 PM								
8:10 PM								